

CORRECTIVE SERVICES

AUSTRALIA

EMBARGO: 11:30AM (CANBERRA TIME) THURS 28 SEPT 2000

C O N T E N T S

	<i>page</i>
Notes	2
Summary of findings	3

TABLES

1 Persons in prison custody	6
2 Persons in prison custody, by sex and type of prison custody	8
3 Persons in prison custody, by legal status and sentence type	14
4 Sentenced receptions into prison custody, by type of sentence ..	18
5 Indigenous persons in prison custody, by sex	20
6 Indigenous persons in prison custody, by legal status and sentence type	23
7 Persons in periodic detention, by sex	27
8 Federal sentenced persons in prison custody, by sex	29

ADDITIONAL INFORMATION

Explanatory notes	30
Appendix	34
Glossary	35

- For further information about these and related statistics, contact the National Information Service on 1300 135 070 or Nick Skondreas on Melbourne 03 9615 7362.

NOTES

FORTHCOMING ISSUES

<i>ISSUE</i>	<i>RELEASE DATE</i>
September 2000	21 December 2000
December 2000	29 March 2001



ABOUT THIS PUBLICATION

This publication presents monthly information on persons in custody. The statistics are derived from information collected by the Australian Bureau of Statistics from administrative records held by corrective services agencies in each State and Territory. Details are provided for each State and Territory, together with numbers and imprisonment rates by type of custody (i.e. open or secure custody or periodic detention). Information is also presented on prisoner numbers by legal status (sentenced or unsentenced) and by sentence type, for all prisoners and for Indigenous prisoners, together with the number of sentenced receptions into custody and the number of federal prisoners.

The valuable contribution of the Board of Management and the Advisory Group of the National Corrective Services Statistics Unit (NCSSU) to the production of the statistics in this publication is acknowledged.

SYMBOLS AND OTHER USAGES

ABS	Australian Bureau of Statistics
ERP	Estimated Resident Population
n.a.	not available
n.p.	not published
r	figures or series revised since previous issue
. .	not applicable
—	nil or rounded to zero

Where figures have been rounded discrepancies may occur between the sum of component items and the total.

T.J. Skinner
Acting Australian Statistician

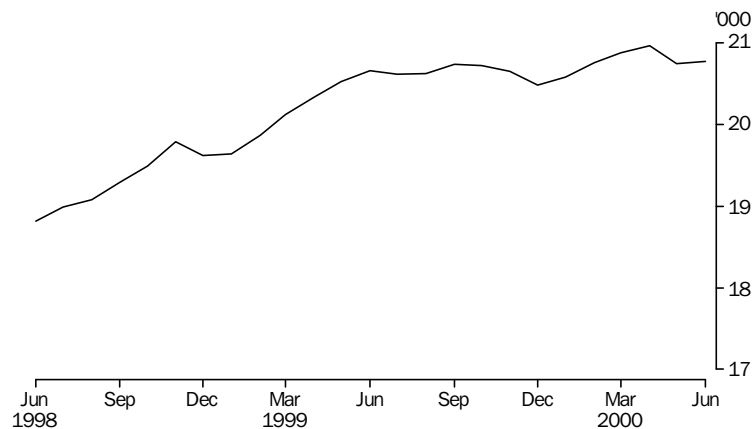
SUMMARY OF FINDINGS

NUMBER OF PRISONERS

In the June quarter 2000 the average daily number of prisoners in Australia was 20,828, an increase of 91 (less than 1%) on the March quarter 2000. Most States and Territories reported only small variations in prisoner numbers from March 2000. New South Wales and Western Australia recorded the greatest increases, rising by 104 prisoners (1%) and 85 prisoners (3%) respectively. The number of prisoners in Queensland and the Northern Territory was down by 208 (4%) and 8 (1%) respectively.

The average daily number of prisoners in Australia increased by 324 (2%) over the year from the June quarter 1999. The largest increases from the June quarter 1999 were recorded in Victoria and New South Wales, rising by 231 (8%) and 219 (3%) respectively. Queensland recorded the greatest decrease (245, or 5%).

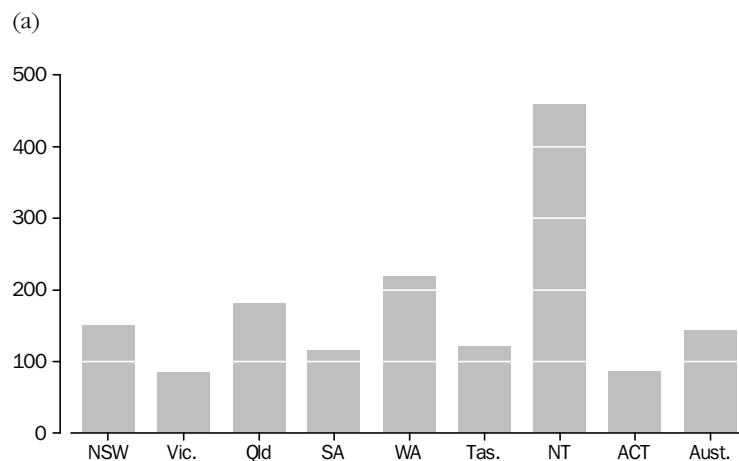
PERSONS IN PRISON CUSTODY—Australia



RATES PER 100,000 ADULTS

Nationally, the average daily imprisonment rate was 144 prisoners per 100,000 adult population during the June quarter 2000. The Northern Territory had the highest imprisonment rate per 100,000 adult population, with a rate of 459. This is substantially greater than the next highest jurisdictions, Western Australia and Queensland, with rates of 218 and 182 prisoners per 100,000 adult population respectively.

AVERAGE DAILY IMPRISONMENT RATE



(a) Rate per 100,000 adult population.

SUMMARY OF FINDINGS *continued*

SEX

Of the average daily number of prisoners in Australia during the June quarter 2000, 19,527 (94%) were males and 1,301 (6%) were females. The proportion of male and female prisoners remained unchanged from the March quarter 2000 to the June quarter 2000. For the June quarter 2000 these proportions varied only slightly between States and Territories.

TYPE OF CUSTODY

In the June quarter 2000 the average daily number of prisoners in secure prison custody in Australia was 14,901 (72%). The remaining 5,927 prisoners (28%) were held in open prison custody. The highest proportion of prisoners held in secure prisons was recorded in Victoria (89%), followed by South Australia (87%). The State or Territory with the lowest proportion of prisoners in secure prison custody was the Australian Capital Territory (including Australian Capital Territory prisoners held in New South Wales prisons) with 49%. All female prisoners in South Australia, Tasmania and the Northern Territory were held in secure prison custody.

LEGAL STATUS AND SENTENCE TYPE

On 1 June 2000, there were 20,745 prisoners in Australia. Of these, 16,888 (81%) were sentenced and 3,857 (19%) were unsentenced. The Northern Territory had the highest proportion of unsentenced persons in prison custody (29%), followed by South Australia (27%). Victoria, Queensland and Western Australia recorded the lowest proportion of unsentenced persons in prison custody each with 15%.

SENTENCED RECEPTIONS

There were 8,029 sentenced receptions in Australia during the June quarter 2000. Queensland reported the highest number of sentenced receptions with 3,308 prisoners, followed by 1,931 in New South Wales and 1,041 in Victoria. Of all sentenced receptions in Australia during this quarter, 1,223 (15%) were of persons received into custody for default of fines and no other sentence (fine default only), with Queensland reporting 934 (76%) of these fine default only receptions. As a consequence of the introduction of Fine Enforcement Legislation in March 2000, the number of prisoners received into South Australia for fine default has fallen dramatically. It has decreased from 289 in the December 1999 quarter to 99 in the March 2000 quarter and 2 in the June 2000 quarter.

During the June quarter 2000, the sentenced reception rate for Australia was 56 per 100,000 adult population. The highest sentenced reception rates were recorded in the Northern Territory and Queensland (200 and 123 persons per 100,000 adult population respectively). It should be noted that persons imprisoned for fine default usually serve a relatively short time in custody. Fine default prisoners comprise only 2% of the total prisoner population.

SUMMARY OF FINDINGS *continued*

INDIGENOUS PRISONERS

On 1 June 2000, there were 4,019 Indigenous prisoners in Australia (19% of the Australian prisoner population). The highest number of Indigenous prisoners was recorded in New South Wales (1,158). The Northern Territory recorded the highest proportion of Indigenous prisoners, where 60% of all prisoners were Indigenous.

The national rate of imprisonment for Indigenous persons was 1,729 per 100,000 adult Indigenous population. The corresponding rate for the total adult population of Australia was 143 per 100,000 persons. The highest rate of imprisonment for Indigenous persons was recorded in Western Australia (3,010 Indigenous persons per 100,000 adult Indigenous population) followed by New South Wales and Queensland (1,819 and 1,687 Indigenous persons per 100,000 adult Indigenous population respectively).

Nationally, the Indigenous rate of imprisonment was 15 times the non-Indigenous rate. The highest ratios of Indigenous to non-Indigenous rates of imprisonment were recorded in Western Australia and South Australia which had Indigenous rates of imprisonment 20 and 16 times the non-Indigenous rates respectively.

Further information on the interpretation of statistics on Indigenous persons in prison custody is provided in an Appendix on page 34 of this publication.

PERIODIC DETENTION

Periodic Detention is a form of custody only used in New South Wales and the Australian Capital Territory. There was an average daily number of 1,264 persons in New South Wales and 72 persons in the Australian Capital Territory held in periodic detention during the June quarter 2000.

FEDERAL PRISONERS

On 1 June 2000, there were 691 federal sentenced prisoners in Australia. Of these, 319 (46%) were sentenced in New South Wales, followed by Western Australia with 132 (19%) and Queensland with 102 (15%) respectively.

1 PERSONS IN PRISON CUSTODY(a)

Period	NSW(b)	Vic.	Qld	SA	WA	Tas.	NT	ACT in NSW(c)	ACT(d)	Aust.(c)
AVERAGE DAILY NUMBER										
1997	6 330	2 566	4 169	1 473	2 234	259	593	118	37	17 661
1998	6 516	2 796	4 874	1 403	2 389	302	607	118	37	18 923
1999	7 117	2 945	5 095	1 363	2 903	343	615	129	36	20 416
1999										
June quarter	7 127	2 899	5 137	1 369	2 959	339	642	124	31	20 504
September quarter	7 280	2 971	5 049	1 384	2 990	347	603	128	35	20 659
December quarter	7 221	3 079	5 094	1 327	2 896	367	585	135	42	20 611
2000										
March quarter	7 242	3 069	5 100	1 308	2 953	374	640	142	51	20 737
June quarter	7 346	3 130	4 892	1 312	3 038	429	632	151	49	20 828
1999										
April	7 050	2 892	5 143	1 354	2 890	330	642	123	30	20 332
May	7 127	2 895	5 155	1 349	2 972	343	650	122	33	20 524
June	7 205	2 911	5 111	1 406	3 015	345	634	127	30	20 656
July	7 234	2 928	5 061	1 388	3 011	346	615	126	35	20 617
August	7 287	2 961	5 027	1 394	2 984	343	594	127	36	20 626
September	7 319	3 027	5 059	1 370	2 973	352	601	131	36	20 737
October	7 267	3 081	5 107	1 334	2 922	364	573	132	48	20 695
November	7 238	3 096	5 111	1 340	2 891	363	573	133	41	20 653
December	7 160	3 060	5 064	1 306	2 876	375	608	141	36	20 485
2000										
January	7 177	3 088	5 065	1 302	2 911	362	629	144	45	20 579
February	7 266	3 051	5 096	1 305	2 960	368	655	144	52	20 753
March	7 285	3 067	5 138	1 318	2 988	391	637	139	55	20 879
April	7 397	3 126	4 993	1 322	2 993	450	634	141	49	20 964
May	7 308	3 121	4 875	1 312	3 037	418	636	152	42	20 749
June	7 334	3 142	4 809	1 301	3 083	420	627	160	55	20 771

(a) Includes Work Outreach Camps and Community Custody Centres in Qld—see Explanatory Notes, paragraph 8.

(b) Persons sentenced to full-time custody in the ACT are held in NSW prisons. These persons are included in the NSW figures, as well as being reported separately under 'ACT in NSW'.

(c) The ACT in NSW figures refer to the persons described in (b) above. The figures are a single count taken on a specific day of the month and are not an average of the daily prisoner population for that month. The figures are a subset of the NSW figures and are NOT included in the totals for Australia.

(d) Refers to unsentenced persons in ACT prison custody—see Explanatory Notes, paragraph 14.

1

PERSONS IN PRISON CUSTODY(a) *continued*

Period	NSW(b)	Vic.	Qld	SA	WA	Tas.	NT	ACT in NSW(c)	ACT(d)	Aust.(c)
RATE PER 100,000 ADULT POPULATION										
1997	134.6	72.6	162.6	131.2	168.4	73.0	449.1	50.4	11.8	126.1
1998	137.5	78.5	188.2	124.4	177.9	85.0	455.7	50.4	15.8	134.3
1999	148.1	81.4	193.0	120.0	211.6	96.4	453.9	54.7	15.3	142.8
1999										
June quarter	148.5	80.3	195.0	120.7	216.2	95.4	475.5	52.9	13.2	143.6
September quarter	151.2	82.0	190.9	121.8	217.4	97.5	444.3	54.4	15.1	144.2
December quarter	149.5	84.7	191.6	116.6	209.8	103.2	428.7	57.4	17.6	143.4
2000										
March quarter	149.4	84.1	191.0	114.8	212.8	105.0	467.1	61.3	21.8	143.8
June quarter	151.0	85.4	182.2	114.9	218.1	120.4	459.3	64.8	20.9	143.9
1999										
April	146.9	80.1	195.3	119.3	211.1	92.9	475.7	52.5	12.8	142.4
May	148.5	80.2	195.7	118.9	217.1	96.4	481.4	52.0	14.1	143.8
June	150.1	80.6	194.0	123.9	220.2	96.9	469.3	54.2	12.8	144.7
July	150.2	80.8	191.3	122.2	218.9	97.2	453.1	53.6	14.8	143.9
August	151.3	81.7	190.0	122.7	217.0	96.4	437.3	54.0	15.2	144.0
September	152.0	83.5	191.3	120.6	216.2	98.9	442.6	55.5	15.2	144.8
October	150.5	84.7	192.1	117.3	211.6	102.2	420.0	56.1	20.2	144.0
November	149.9	85.1	192.3	117.8	209.4	102.1	420.1	56.4	17.2	143.7
December	148.2	84.2	190.5	114.8	208.3	105.4	445.8	59.8	15.4	142.5
2000										
January	148.1	84.6	189.7	114.3	209.8	101.7	459.3	62.0	19.5	142.7
February	149.9	83.6	190.8	114.5	213.4	103.4	477.9	62.1	22.4	143.9
March	150.3	84.0	192.4	115.7	215.4	109.8	465.1	59.9	23.6	144.8
April	152.0	85.3	186.0	115.8	214.9	126.4	460.4	60.4	20.9	144.8
May	150.2	85.2	181.6	114.9	218.0	117.2	462.1	65.2	18.1	143.3
June	150.7	85.7	179.1	114.0	221.3	117.8	455.3	68.8	23.8	143.5

(a) Includes Work Outreach Centres and Community Custody Centres in Qld—see Explanatory Notes, paragraph 8.

(b) Persons sentenced to full-time custody in the ACT are held in NSW prisons. These persons are included in the NSW figures, as well as being reported separately under 'ACT in NSW'.

(c) The ACT in NSW figures refer to the persons described in (b) above. The figures are a single count taken on a specific day of the month and are not an average of the daily prisoner population for that month. The figures are a subset of the NSW figures and are NOT included in the totals for Australia.

(d) Refers to unsentenced persons in ACT prison custody—see Explanatory Notes, paragraph 14.

2

PERSONS IN PRISON CUSTODY, By Sex and Type of Prison Custody

Prison custody and sex	NSW(a)	Vic.	Qld	SA	WA	Tas.	NT	ACT in NSW(b)	ACT(c)	Aust.(b)
AVERAGE DAILY NUMBER										
Males										
Secure prison custody										
1998	3 381	2 341	3 716	1 137	1 462	198	465	32	34	12 733
1999	3 744	2 465	3 844	1 100	1 758	235	476	39	33	13 654
1999										
June quarter	3 734	2 416	3 858	1 105	1 775	236	493	39	29	13 646
September quarter	3 826	2 482	3 812	1 121	1 783	243	466	38	33	13 766
December quarter	3 753	2 589	3 853	1 071	1 768	253	468	40	36	13 790
2000										
March quarter	3 782	2 593	3 839	1 054	1 804	263	513	41	44	13 892
June quarter	3 765	2 616	3 779	1 072	1 851	319	494	48	43	13 940
April	3 840	2 615	3 866	1 079	1 817	329	499	46	43	14 088
May	3 736	2 613	3 777	1 078	1 852	312	495	46	38	13 901
June	3 720	2 619	3 695	1 060	1 886	315	488	52	48	13 832
Open prison custody										
1998	2 792	301	892	187	766	93	113	79	..	5 142
1999	2 953	301	943	188	930	91	113	82	..	5 520
1999										
June quarter	2 970	305	968	191	970	85	121	78	..	5 612
September quarter	3 020	310	929	190	983	90	112	81	..	5 635
December quarter	3 038	305	915	179	918	92	98	85	..	5 545
2000										
March quarter	3 015	291	917	183	920	87	110	90	..	5 523
June quarter	3 121	322	816	174	943	87	125	92	..	5 587
April	3 097	318	817	180	939	97	121	85	..	5 569
May	3 113	311	811	171	939	83	128	95	..	5 555
June	3 152	336	820	171	951	80	127	96	..	5 636
Total prison custody										
1998	6 172	2 641	4 607	1 324	2 228	290	579	112	34	17 875
1999	6 697	2 766	4 786	1 288	2 688	326	590	121	33	19 174
1999										
June quarter	6 705	2 721	4 826	1 296	2 745	321	614	117	29	19 257
September quarter	6 846	2 792	4 741	1 310	2 767	333	579	119	33	19 401
December quarter	6 791	2 894	4 768	1 249	2 685	345	566	126	36	19 335
2000										
March quarter	6 797	2 883	4 757	1 237	2 724	350	622	131	44	19 415
June quarter	6 886	2 937	4 595	1 246	2 794	406	619	140	43	19 527
April	6 937	2 933	4 683	1 259	2 755	427	620	131	43	19 657
May	6 849	2 924	4 588	1 249	2 791	395	623	141	38	19 456
June	6 872	2 955	4 515	1 231	2 837	395	615	148	48	19 468

(a) Persons sentenced to full-time custody in the ACT are held in NSW prisons.

These persons are included in the NSW figures, as well as being reported separately under 'ACT in NSW'.

(b) The ACT in NSW figures refer to the persons described in (a) above. The figures are a single count taken on a specific day of the month and are not an average of the daily prisoner population for that month. The figures are a subset of the NSW figures and are NOT included in the totals for Australia.

(c) Refers to unsentenced persons in ACT prison custody—see Explanatory Notes, paragraph 14.

<i>Prison custody and sex</i>	<i>NSW(a)</i>	<i>Vic.</i>	<i>Qld</i>	<i>SA</i>	<i>WA</i>	<i>Tas.</i>	<i>NT</i>	<i>ACT in NSW(b)</i>	<i>ACT(c)</i>	<i>Aust.(b)</i>
AVERAGE DAILY NUMBER										
Females										
Secure prison custody										
1998	223	125	195	79	100	12	28	—	3	764
1999	277	146	216	74	142	17	25	—	3	901
1999										
June quarter	279	146	206	73	139	18	28	—	2	891
September quarter	283	146	222	74	144	14	25	—	3	910
December quarter	279	150	237	77	144	23	19	—	6	934
2000										
March quarter	284	154	255	71	154	24	17	—	6	966
June quarter	288	157	245	65	163	24	13	—	6	961
April	287	157	258	63	161	24	14	—	5	969
May	283	161	246	63	167	23	13	—	4	961
June	293	153	232	70	162	25	11	—	7	953
Open prison custody										
1998	122	30	71	—	61	—	—	6	..	284
1999	144	33	92	—	73	—	—	8	..	342
1999										
June quarter	143	33	105	—	75	—	—	7	..	356
September quarter	150	33	85	—	80	—	—	9	..	348
December quarter	152	34	89	—	67	—	—	10	..	342
2000										
March quarter	160	32	88	—	75	—	—	11	..	356
June quarter	173	35	52	—	80	—	—	11	..	340
April	173	36	52	—	77	—	—	10	..	338
May	176	36	41	—	80	—	—	11	..	333
June	169	34	62	—	84	—	—	12	..	349
Total prison custody										
1998	344	155	267	79	161	12	28	6	3	1 048
1999	421	179	309	74	215	17	25	8	3	1 242
1999										
June quarter	423	178	310	73	214	18	28	7	2	1 247
September quarter	434	179	308	74	223	14	25	9	3	1 258
December quarter	431	184	325	77	211	23	19	10	6	1 276
2000										
March quarter	445	186	343	71	229	24	17	11	6	1 322
June quarter	460	192	297	65	244	24	13	11	6	1 301
April	460	193	310	63	238	24	14	10	5	1 307
May	459	197	287	63	247	23	13	11	4	1 293
June	462	187	294	70	247	25	11	12	7	1 303

(a) Persons sentenced to full-time custody in the ACT are held in NSW prisons. These persons are included in the NSW figures, as well as being reported separately under 'ACT in NSW'.

(b) The ACT in NSW figures refer to the persons described in (a) above. The figures are a single count taken on a specific day of the month and are not an average of the daily prisoner population for that month. The figures are a subset of the NSW figures and are NOT included in the totals for Australia.

(c) Refers to unsentenced persons in ACT prison custody—see Explanatory Notes, paragraph 14.

<i>Prison custody and sex</i>	<i>NSW(a)</i>	<i>Vic.</i>	<i>Qld</i>	<i>SA</i>	<i>WA</i>	<i>Tas.</i>	<i>NT</i>	<i>ACT in NSW(b)</i>	<i>ACT(c)</i>	<i>Aust.(b)</i>
AVERAGE DAILY NUMBER										
Persons										
Secure prison custody										
1998	3 603	2 465	3 911	1 216	1 562	209	493	32	37	13 497
1999	4 021	2 611	4 060	1 174	1 901	252	501	39	36	14 555
1999										
June quarter	4 014	2 561	4 064	1 178	1 915	254	521	39	31	14 537
September quarter	4 109	2 628	4 034	1 194	1 927	257	491	38	35	14 676
December quarter	4 032	2 739	4 090	1 148	1 912	276	487	40	42	14 724
2000										
March quarter	4 067	2 747	4 095	1 125	1 958	287	530	41	51	14 858
June quarter	4 053	2 773	4 025	1 138	2 015	343	507	48	49	14 901
April	4 127	2 772	4 124	1 142	1 977	353	513	46	49	15 057
May	4 019	2 774	4 023	1 141	2 019	335	509	46	42	14 861
June	4 013	2 772	3 927	1 130	2 048	340	500	52	55	14 786
Open prison custody										
1998	2 913	331	963	187	827	93	113	85	..	5 427
1999	3 097	333	1 035	188	1 003	91	113	90	..	5 861
1999										
June quarter	3 114	338	1 073	191	1 044	85	121	85	..	5 967
September quarter	3 171	343	1 015	190	1 063	90	112	90	..	5 983
December quarter	3 190	339	1 004	179	985	92	98	95	..	5 887
2000										
March quarter	3 175	323	1 005	183	995	87	110	101	..	5 878
June quarter	3 293	357	867	174	1 023	87	125	103	..	5 927
April	3 270	354	869	180	1 016	97	121	95	..	5 907
May	3 289	347	852	171	1 018	83	128	106	..	5 888
June	3 321	370	882	171	1 035	80	127	108	..	5 986
Total prison custody										
1998	6 516	2 796	4 874	1 403	2 389	302	607	118	37	18 923
1999	7 117	2 945	5 095	1 363	2 903	343	615	129	36	20 416
1999										
June quarter	7 127	2 899	5 137	1 369	2 959	339	642	124	31	20 504
September quarter	7 280	2 971	5 049	1 384	2 990	347	603	128	35	20 659
December quarter	7 221	3 079	5 094	1 327	2 896	367	585	135	42	20 611
2000										
March quarter	7 242	3 069	5 100	1 308	2 953	374	640	142	51	20 737
June quarter	7 346	3 130	4 892	1 312	3 038	429	632	151	49	20 828
April	7 397	3 126	4 993	1 322	2 993	450	634	141	49	20 964
May	7 308	3 121	4 875	1 312	3 037	418	636	152	42	20 749
June	7 334	3 142	4 809	1 301	3 083	420	627	160	55	20 771

- (a) Persons sentenced to full-time custody in the ACT are held in NSW prisons. These persons are included in the NSW figures, as well as being reported separately under 'ACT in NSW'.
- (b) The ACT in NSW figures refer to the persons described in (a) above. The figures are a single count taken on a specific day of the month and are not an average of the daily prisoner population for that month. The figures are a subset of the NSW figures and are NOT included in the totals for Australia.
- (c) Refers to unsentenced persons in ACT prison custody—see Explanatory Notes, paragraph 14.

2

PERSONS IN PRISON CUSTODY, By Sex and Type of Prison Custody *continued*

<i>Prison custody and sex</i>	<i>NSW(a)</i>	<i>Vic.</i>	<i>Qld</i>	<i>SA</i>	<i>WA</i>	<i>Tas.</i>	<i>NT</i>	<i>ACT in NSW(b)</i>	<i>ACT(c)</i>	<i>Aust.(b)</i>
RATE PER 100,000 ADULT POPULATION										
Males										
Secure prison custody										
1998	145.2	134.4	288.9	206.2	218.1	114.2	656.4	28.1	29.5	183.6
1999	158.4	139.3	293.3	198.2	256.5	135.6	659.6	33.5	28.1	193.8
1999										
June quarter	158.2	136.8	295.0	199.3	259.6	136.2	684.8	33.7	25.1	194.0
September quarter	161.5	140.0	290.2	201.8	259.5	140.5	644.4	32.8	28.2	195.0
December quarter	157.9	145.6	291.9	192.5	256.1	146.2	642.4	34.7	30.8	194.7
2000										
March quarter	158.6	145.1	289.6	189.2	260.2	151.7	701.4	35.9	38.7	195.4
June quarter	157.2	145.9	283.6	192.1	265.9	184.0	671.2	41.5	37.5	195.3
April	160.3	145.8	290.1	193.3	260.9	190.0	677.6	39.6	37.8	197.4
May	156.0	145.7	283.4	193.1	265.9	180.0	672.5	39.6	32.9	194.8
June	155.3	146.1	277.3	189.9	270.9	182.0	663.2	45.2	42.0	193.8
Open prison custody										
1998	119.9	17.3	69.3	33.9	114.3	53.5	159.5	69.0	..	74.1
1999	124.9	17.0	72.0	33.9	135.7	52.8	157.3	70.3	..	78.3
1999										
June quarter	125.8	17.3	74.1	34.5	141.8	49.3	168.8	67.4	..	79.8
September quarter	127.5	17.5	70.8	34.2	143.1	51.9	155.1	69.4	..	79.8
December quarter	127.8	17.2	69.4	32.2	133.0	53.0	135.1	73.1	..	78.3
2000										
March quarter	126.4	16.3	69.2	32.9	132.7	50.1	149.9	78.9	..	77.7
June quarter	130.3	17.9	61.2	31.2	135.4	50.0	170.2	80.1	..	78.3
April	129.3	17.7	61.3	32.2	134.8	56.2	164.4	74.0	..	78.0
May	130.0	17.3	60.9	30.6	134.8	47.9	173.4	82.7	..	77.8
June	131.6	18.7	61.5	30.6	136.5	45.9	172.7	83.6	..	79.0
Total prison custody										
1998	265.0	151.7	358.2	240.1	332.3	167.8	815.9	97.1	29.5	257.7
1999	283.2	156.3	365.2	232.1	392.2	188.4	816.9	103.8	28.1	272.1
1999										
June quarter	284.0	154.1	369.1	233.8	401.4	185.5	853.6	101.0	25.1	273.8
September quarter	289.1	157.5	361.0	235.9	402.6	192.4	799.4	102.2	28.2	274.8
December quarter	285.7	162.7	361.3	224.7	389.1	199.2	777.5	107.8	30.8	272.9
2000										
March quarter	285.0	161.4	358.7	222.1	392.9	201.8	851.4	114.8	38.7	273.1
June quarter	287.5	163.8	344.8	223.3	401.3	233.9	841.4	121.6	37.5	273.6
April	289.7	163.6	351.4	225.6	395.7	246.2	842.0	113.6	37.8	275.4
May	286.0	163.1	344.3	223.8	400.8	227.9	846.0	122.3	32.9	272.6
June	287.0	164.8	338.8	220.6	407.4	227.9	836.0	128.8	42.0	272.8

(a) Persons sentenced to full-time custody in the ACT are held in NSW prisons. These persons are included in the NSW figures, as well as being reported separately under 'ACT in NSW'.

(b) The ACT in NSW figures refer to the persons described in (a) above. The figures are a single count taken on a specific day of the month and are not an average of the daily prisoner population for that month. The figures are a subset of the NSW figures and are NOT included in the totals for Australia.

(c) Refers to unsentenced persons in ACT prison custody—see Explanatory Notes, paragraph 14.

<i>Prison custody and sex</i>	<i>NSW(a)</i>	<i>Vic.</i>	<i>Qld</i>	<i>SA</i>	<i>WA</i>	<i>Tas.</i>	<i>NT</i>	<i>ACT in NSW(b)</i>	<i>ACT(c)</i>	<i>Aust.(b)</i>
RATE PER 100,000 ADULT POPULATION										
Females										
Secure prison custody										
1998	9.2	6.8	15.0	13.8	14.9	6.3	44.9	—	2.5	10.7
1999	11.3	7.9	16.3	12.8	20.7	9.2	39.7	—	2.7	12.4
1999										
June quarter	11.4	7.9	15.5	12.6	20.3	10.0	44.4	—	1.7	12.3
September quarter	11.6	7.9	16.7	12.7	20.9	7.4	39.0	—	2.2	12.5
December quarter	11.4	8.1	17.7	13.2	20.9	12.3	29.8	—	4.7	12.8
2000										
March quarter	11.5	8.3	19.0	12.2	22.1	13.3	27.2	—	5.3	13.2
June quarter	11.6	8.4	18.1	11.2	23.5	12.9	20.3	—	4.7	13.1
April	11.6	8.4	19.1	10.8	23.1	12.9	22.0	—	4.5	13.2
May	11.5	8.6	18.2	10.8	24.0	12.5	21.0	—	3.6	13.1
June	11.9	8.2	17.2	12.0	23.3	13.5	17.9	—	6.0	13.0
Open prison custody										
1998	5.0	1.7	5.5	—	9.1	—	—	5.1	..	4.0
1999	5.9	1.8	6.9	—	10.6	—	—	6.8	..	4.7
1999										
June quarter	5.9	1.8	7.9	—	10.9	—	—	5.9	..	4.9
September quarter	6.1	1.8	6.4	—	11.6	—	—	7.6	..	4.8
December quarter	6.2	1.8	6.6	—	9.7	—	—	8.1	..	4.7
2000										
March quarter	6.5	1.7	6.5	—	10.8	—	—	9.1	..	4.9
June quarter	7.0	1.9	3.8	—	11.5	—	—	9.4	..	4.6
April	7.0	1.9	3.8	—	11.1	—	—	8.5	..	4.6
May	7.1	1.9	3.0	—	11.4	—	—	9.4	..	4.5
June	6.8	1.8	4.6	—	12.1	—	—	10.2	..	4.8
Total prison custody										
1998	14.3	8.5	20.4	13.8	23.9	6.3	44.9	5.1	2.5	14.7
1999	17.2	9.7	23.2	12.8	31.3	9.2	39.7	6.8	2.7	17.1
1999										
June quarter	17.3	9.7	23.4	12.6	31.3	10.0	44.4	5.9	1.7	17.2
September quarter	17.7	9.7	23.1	12.7	32.4	7.4	39.0	7.6	2.2	17.3
December quarter	17.6	9.9	24.3	13.2	30.6	12.3	29.8	8.1	4.7	17.5
2000										
March quarter	18.1	10.0	25.5	12.2	33.0	13.3	27.2	9.1	5.3	18.1
June quarter	18.6	10.3	22.0	11.2	35.0	12.9	20.3	9.4	4.7	17.7
April	18.6	10.3	22.9	10.8	34.2	12.9	22.0	8.5	4.5	17.8
May	18.6	10.5	21.2	10.8	35.4	12.5	21.0	9.4	3.6	17.6
June	18.7	10.0	21.7	12.0	35.4	13.5	17.9	10.2	6.0	17.8

(a) Persons sentenced to full-time custody in the ACT are held in NSW prisons. These persons are included in the NSW figures, as well as being reported separately under 'ACT in NSW'.

(b) The ACT in NSW figures refer to the persons described in (a) above. The figures are a single count taken on a specific day of the month and are not an average of the daily prisoner population for that month. The figures are a subset of the NSW figures and are NOT included in the totals for Australia.

(c) Refers to unsentenced persons in ACT prison custody—see Explanatory Notes, paragraph 14.

<i>Prison custody and sex</i>	<i>NSW(a)</i>	<i>Vic.</i>	<i>Qld</i>	<i>SA</i>	<i>WA</i>	<i>Tas.</i>	<i>NT</i>	<i>ACT in NSW(b)</i>	<i>ACT(c)</i>	<i>Aust.(b)</i>
RATE PER 100,000 ADULT POPULATION										
Persons										
Secure prison custody										
1998	76.0	69.2	151.0	107.8	116.3	58.9	370.7	13.8	15.8	95.8
1999	83.6	72.2	153.8	103.4	138.5	70.7	370.1	16.6	15.3	101.8
1999										
June quarter	83.6	70.9	154.3	103.8	139.9	71.4	385.6	16.6	13.2	101.8
September quarter	85.3	72.5	152.5	105.1	140.1	72.2	361.7	16.2	15.1	102.5
December quarter	83.5	75.3	153.9	100.9	138.4	77.5	356.7	17.1	17.6	102.5
2000										
March quarter	83.9	75.2	153.3	98.7	141.1	80.6	387.1	17.7	21.8	103.0
June quarter	83.3	75.7	149.9	99.7	144.6	96.1	368.3	20.5	20.9	102.9
April	84.8	75.6	153.6	100.0	141.9	99.0	372.5	19.6	20.9	104.0
May	82.6	75.7	149.9	99.9	144.9	94.0	369.3	19.6	18.1	102.7
June	82.5	75.6	146.3	99.0	147.0	95.4	362.9	22.3	23.8	102.1
Open prison custody										
1998	61.5	9.3	37.2	16.6	61.6	26.1	85.0	36.6	..	38.5
1999	64.4	9.2	39.2	16.6	73.1	25.7	83.8	38.2	..	41.0
1999										
June quarter	64.9	9.4	40.7	16.9	76.3	24.0	89.9	36.2	..	41.8
September quarter	65.9	9.5	38.4	16.7	77.3	25.3	82.7	38.1	..	41.8
December quarter	66.0	9.3	37.8	15.7	71.3	25.8	72.1	40.3	..	41.0
2000										
March quarter	65.5	8.8	37.6	16.1	71.7	24.4	80.0	43.6	..	40.8
June quarter	67.7	9.7	32.3	15.2	73.4	24.3	91.0	44.3	..	40.9
April	67.2	9.7	32.4	15.8	72.9	27.3	87.9	40.9	..	40.8
May	67.6	9.5	31.7	15.0	73.1	23.3	92.7	45.6	..	40.7
June	68.3	10.1	32.9	15.0	74.3	22.3	92.4	46.5	..	41.3
Total prison custody										
1998	137.5	78.5	188.2	124.4	177.9	85.0	455.7	50.4	15.8	134.3
1999	148.1	81.4	193.0	120.0	211.6	96.4	453.9	54.7	15.3	142.8
1999										
June quarter	148.5	80.3	195.0	120.7	216.2	95.4	475.5	52.9	13.2	143.6
September quarter	151.2	82.0	190.9	121.8	217.4	97.5	444.3	54.4	15.1	144.2
December quarter	149.5	84.7	191.6	116.6	209.8	103.2	428.7	57.4	17.6	143.4
2000										
March quarter	149.4	84.1	191.0	114.8	212.8	105.0	467.1	61.3	21.8	143.8
June quarter	151.0	85.4	182.2	114.9	218.1	120.4	459.3	64.8	20.9	143.9
April	152.0	85.3	186.0	115.8	214.9	126.4	460.4	60.4	20.9	144.8
May	150.2	85.2	181.6	114.9	218.0	117.2	462.1	65.2	18.1	143.3
June	150.7	85.7	179.1	114.0	221.3	117.8	455.3	68.8	23.8	143.5

(a) Persons sentenced to full-time custody in the ACT are held in NSW prisons. These persons are included in the NSW figures, as well as being reported separately under 'ACT in NSW'.

(b) The ACT in NSW figures refer to the persons described in (a) above. The figures are a single count taken on a specific day of the month and are not an average of the daily prisoner population for that month. The figures are a subset of the NSW figures and are NOT included in the totals for Australia.

(c) Refers to unsentenced persons in ACT prison custody—see Explanatory Notes, paragraph 14.

3

PERSONS IN PRISON CUSTODY, By Legal Status and Sentence Type

Legal status and sentence type	NSW(a)	Vic.	Qld	SA	WA	Tas.	NT	ACT in NSW(b)	ACT(c)	Aust.(b)
NUMBER ON FIRST DAY OF MONTH										
Unsentenced										
1998(d)	1 115	434	523	256	309	51	81	..	37	2 806
1999(d)	1 321	451	616	277	377	56	91	3	41	3 231
1999										
June quarter(d)	1 327	441	615	265	356	44	85	2	35	3 146
September quarter(d)	1 331	436	631	283	378	55	76	2	40	3 229
December quarter(d)	1 356	468	617	293	394	70	106	2	47	3 351
2000										
March quarter(d)	1 469	478	659	344	424	80	144	4	52	3 650
June quarter(d)	1 509	471	694	368	453	93	178	4	54	3 819
April	1 471	488	667	378	448	95	169	7	62	3 778
May	1 521	462	706	360	453	86	182	2	53	3 823
June	1 535	462	708	365	459	97	184	3	47	3 857
Sentenced										
Fine default only										
1998(d)	1	n.a.	171	50	44	3	19	—	..	n.a.
1999(d)	1	5	234	43	71	21	20	2	..	395
1999										
June quarter(d)	—	5	213	47	80	29	23	2	..	397
September quarter(d)	1	4	178	37	68	27	18	—	..	334
December quarter(d)	1	7	288	27	54	12	16	—	..	405
2000										
March quarter(d)	1	5	286	9	54	12	13	—	..	379
June quarter(d)	5	2	246	—	55	7	11	—	..	326
April	4	2	296	—	53	14	10	—	..	379
May	8	2	248	—	51	5	10	—	..	324
June	2	3	195	—	60	3	12	—	..	275
Other sentenced										
1998(d)	5 390	n.a.	4 147	1 097	2 018	248	507	116	..	n.a.
1999(d)	5 796	2 482	4 213	1 043	2 438	257	497	125	..	16 725
1999										
June quarter(d)	5 789	2 449	4 294	1 047	2 492	274	531	120	..	16 875
September quarter(d)	5 946	2 519	4 199	1 066	2 551	250	512	126	..	17 043
December quarter(d)	5 896	2 600	4 157	1 013	2 466	243	451	133	..	16 827
2000										
March quarter(d)	5 777	2 562	4 082	944	2 437	234	474	138	..	16 510
June quarter(d)	5 847	2 659	3 948	963	2 500	261	449	147	..	16 627
April	5 901	2 629	4 002	960	2 481	217	468	134	..	16 658
May	5 826	2 656	3 952	960	2 488	287	440	150	..	16 609
June	5 815	2 691	3 891	968	2 531	279	438	157	..	16 613

(a) Persons sentenced to full-time custody in the ACT are held in NSW prisons. These persons are included in the NSW figures, as well as being reported separately under 'ACT in NSW'.

(b) The ACT in NSW figures refer to the persons described in (a) above. The figures are a subset of the NSW figures and are NOT included in the totals for Australia.

(c) Refers to unsentenced persons in ACT prison custody—see Explanatory Notes, paragraph 14.

(d) Figures for the quarter and year for first day of the month counts are calculated as a simple average—see Explanatory Notes, paragraph 5.

3

PERSONS IN PRISON CUSTODY, By Legal Status and Sentence Type *continued*

<i>Legal status and sentence type</i>	<i>NSW(a)</i>	<i>Vic.</i>	<i>Qld</i>	<i>SA</i>	<i>WA</i>	<i>Tas.</i>	<i>NT</i>	<i>ACT in NSW(b)</i>	<i>ACT(c)</i>	<i>Aust.(b)</i>
NUMBER ON FIRST DAY OF MONTH										
Total sentenced										
1998(d)	5 391	2 349	4 318	1 147	2 063	251	526	116	..	16 045
1999(d)	5 797	2 487	4 447	1 086	2 509	278	517	127	..	17 120
1999										
June quarter(d)	5 789	2 453	4 507	1 094	2 572	303	554	122	..	17 272
September quarter(d)	5 947	2 523	4 377	1 103	2 619	277	530	126	..	17 377
December quarter(d)	5 897	2 607	4 446	1 040	2 520	254	468	133	..	17 232
2000										
March quarter(d)	5 778	2 567	4 368	952	2 491	246	487	138	..	16 889
June quarter(d)	5 852	2 661	4 195	963	2 555	268	459	147	..	16 953
April	5 905	2 631	4 298	960	2 534	231	478	134	..	17 037
May	5 834	2 658	4 200	960	2 539	292	450	150	..	16 933
June	5 817	2 694	4 086	968	2 591	282	450	157	..	16 888
Total										
1998(d)	6 506	2 784	4 841	1 403	2 372	302	608	116	37	18 851
1999(d)	7 118	2 939	5 063	1 363	2 886	334	608	129	41	20 351
1999										
June quarter(d)	7 116	2 894	5 122	1 359	2 927	347	639	124	35	20 439
September quarter(d)	7 278	2 959	5 008	1 386	2 998	332	605	128	40	20 606
December quarter(d)	7 253	3 076	5 062	1 333	2 914	324	574	135	47	20 583
2000										
March quarter(d)	7 247	3 044	5 027	1 296	2 915	326	631	142	52	20 539
June quarter(d)	7 361	3 132	4 888	1 330	3 008	361	638	151	54	20 772
April	7 376	3 119	4 965	1 338	2 982	326	647	141	62	20 815
May	7 355	3 120	4 906	1 320	2 992	378	632	152	53	20 756
June	7 352	3 156	4 794	1 333	3 050	379	634	160	47	20 745

(a) Persons sentenced to full-time custody in the ACT are held in NSW prisons. These persons are included in the NSW figures, as well as being reported separately under 'ACT in NSW'.

(b) The ACT in NSW figures refer to the persons described in (a) above. The figures are a subset of the NSW figures and are NOT included in the totals for Australia.

(c) Refers to unsentenced persons in ACT prison custody—see Explanatory Notes, paragraph 14.

(d) Figures for the quarter and year for first day of the month counts are calculated as a simple average—see Explanatory Notes, paragraph 5.

3

PERSONS IN PRISON CUSTODY, By Legal Status and Sentence Type *continued*

Legal status and sentence type	NSW(a)	Vic.	Qld	SA	WA	Tas.	NT	ACT in NSW(b)	ACT(c)	Aust.(b)
RATE PER 100,000 ADULT POPULATION										
Unsentenced										
1998(d)	23.5	12.2	20.2	22.7	23.0	14.3	61.2	..	15.9	19.9
1999(d)	27.5	12.5	23.4	24.4	27.5	15.8	67.4	0.4	17.5	22.6
1999										
June quarter(d)	27.6	12.2	23.3	23.3	26.0	12.4	63.0	0.9	14.9	22.0
September quarter(d)	27.6	12.0	23.9	24.9	27.5	15.5	55.7	0.7	17.0	22.5
December quarter(d)	28.1	12.9	23.2	25.8	28.5	19.7	77.7	0.9	19.9	23.3
2000										
March quarter(d)	30.3	13.1	24.7	30.2	30.5	22.5	105.1	1.9	22.6	25.3
June quarter(d)	31.0	12.8	25.8	32.2	32.5	26.0	129.5	1.7	23.2	26.4
April	30.2	13.3	24.8	33.1	32.2	26.7	122.7	3.0	26.7	26.1
May	31.3	12.6	26.3	31.5	32.5	24.1	132.2	0.9	22.8	26.4
June	31.5	12.6	26.4	32.0	32.9	27.2	133.6	1.3	20.2	26.6
Sentenced										
Fine default only										
1998(d)	—	n.a.	6.6	4.5	3.3	0.9	14.4	—	..	n.a.
1999(d)	—	0.1	8.8	3.8	5.2	6.0	14.8	0.7	..	2.8
1999										
June quarter(d)	—	0.1	8.1	4.2	5.8	8.2	17.0	1.0	..	2.8
September quarter(d)	—	0.1	6.7	3.2	5.0	7.7	13.0	—	..	2.3
December quarter(d)	—	0.2	10.8	2.4	3.9	3.3	12.0	—	..	2.8
2000										
March quarter(d)	—	0.1	10.7	0.8	3.9	3.5	9.5	—	..	2.6
June quarter(d)	0.1	0.1	9.2	—	3.9	2.1	7.7	—	..	2.3
April	0.1	0.1	11.0	—	3.8	3.9	7.3	—	..	2.6
May	0.2	0.1	9.2	—	3.7	1.4	7.3	—	..	2.2
June	—	0.1	7.3	—	4.3	0.8	8.7	—	..	1.9
Other sentenced										
1998(d)	113.7	n.a.	160.1	97.3	150.3	69.8	380.9	49.6	..	n.a.
1999(d)	120.6	68.6	159.6	91.8	177.7	72.2	366.9	53.2	..	117.0
1999										
June quarter(d)	120.6	67.8	163.0	92.2	182.1	77.0	393.4	51.2	..	118.2
September quarter(d)	123.5	69.5	158.7	93.8	185.5	70.2	376.9	53.8	..	119.0
December quarter(d)	122.1	71.5	156.4	89.0	178.6	68.2	330.9	56.5	..	117.1
2000										
March quarter(d)	119.2	70.2	152.9	82.8	175.7	65.7	345.8	59.4	..	114.5
June quarter(d)	120.2	72.5	147.1	84.3	179.4	73.2	325.8	63.2	..	114.9
April	121.3	71.7	149.1	84.1	178.1	60.9	339.9	57.6	..	115.1
May	119.7	72.5	147.2	84.1	178.6	80.5	319.5	64.5	..	114.7
June	119.5	73.4	144.9	84.8	181.7	78.3	318.1	67.5	..	114.8

(a) Persons sentenced to full-time custody in the ACT are held in NSW prisons. These persons are included in the NSW figures, as well as being reported separately under 'ACT in NSW'.

(b) The ACT in NSW figures refer to the persons described in (a) above. The figures are a subset of the NSW figures and are NOT included in the totals for Australia.

(c) Refers to unsentenced persons in ACT prison custody—see Explanatory Notes, paragraph 14.

(d) Figures for the quarter and year for first day of the month counts are calculated as a simple average—see Explanatory Notes, paragraph 5.

3

PERSONS IN PRISON CUSTODY, By Legal Status and Sentence Type *continued*

<i>Legal status and sentence type</i>	<i>NSW(a)</i>	<i>Vic.</i>	<i>Qld</i>	<i>SA</i>	<i>WA</i>	<i>Tas.</i>	<i>NT</i>	<i>ACT in NSW(b)</i>	<i>ACT(c)</i>	<i>Aust.(b)</i>
RATE PER 100,000 ADULT POPULATION										
Total sentenced										
1998(d)	113.8	65.9	166.7	101.7	153.6	70.7	395.3	49.7	..	113.9
1999(d)	120.6	68.7	168.4	95.6	182.9	78.2	381.6	54.0	..	119.7
1999										
June quarter(d)	120.6	67.9	171.1	96.4	187.9	85.3	410.4	52.2	..	121.0
September quarter(d)	123.5	69.6	165.4	97.0	190.5	77.9	389.9	53.8	..	121.3
December quarter(d)	122.1	71.7	167.2	91.4	182.5	71.5	342.9	56.5	..	119.9
2000										
March quarter(d)	119.2	70.3	163.6	83.6	179.6	69.2	355.3	59.4	..	117.1
June quarter(d)	120.3	72.6	156.3	84.3	183.4	75.3	333.6	63.2	..	117.1
April	121.4	71.8	160.1	84.1	181.9	64.8	347.1	57.6	..	117.7
May	119.9	72.5	156.4	84.1	182.2	81.9	326.8	64.5	..	117.0
June	119.6	73.5	152.2	84.8	186.0	79.1	326.8	67.5	..	116.7
Total										
1998(d)	137.3	78.1	186.9	124.4	176.6	85.1	456.4	49.7	15.9	133.8
1999(d)	148.1	81.2	191.8	120.1	210.4	94.0	449.1	55.1	17.5	142.4
1999										
June quarter(d)	148.3	80.2	194.5	119.7	213.9	97.6	473.4	53.0	14.9	143.2
September quarter(d)	151.2	81.6	189.3	121.9	218.0	93.4	445.6	54.5	17.0	143.9
December quarter(d)	150.2	84.6	190.4	117.2	211.0	91.2	420.6	57.4	19.9	143.2
2000										
March quarter(d)	149.5	83.4	188.2	113.8	210.1	91.6	460.4	61.3	22.6	142.4
June quarter(d)	151.3	85.5	182.1	116.5	215.9	101.3	463.1	65.0	23.2	143.5
April	151.6	85.1	184.9	117.2	214.0	91.5	469.9	60.6	26.7	143.8
May	151.2	85.1	182.7	115.6	214.8	106.0	459.0	65.4	22.8	143.4
June	151.1	86.1	178.6	116.8	218.9	106.3	460.4	68.8	20.2	143.3

(a) Persons sentenced to full-time custody in the ACT are held in NSW prisons. These persons are included in the NSW figures, as well as being reported separately under 'ACT in NSW'.

(b) The ACT in NSW figures refer to the persons described in (a) above. The figures are a subset of the NSW figures and are NOT included in the totals for Australia.

(c) Refers to unsentenced persons in ACT prison custody—see Explanatory Notes, paragraph 14.

(d) Figures for the quarter and year for first day of the month counts are calculated as a simple average—see Explanatory Notes, paragraph 5.

4

SENTENCED RECEPTIONS INTO PRISON CUSTODY, By Type of Sentence

Sentence type	NSW	Vic.(a)	Qld	SA	WA	Tas.	NT	ACT in NSW(b)	ACT	Aust.(b)
NUMBER										
Fine default only										
1998	55	70	3 813	1 810	533	292	824	5	..	7 397
1999	44	47	4 696	1 712	644	267	939	3	..	8 349
1999										
June quarter	12	11	1 006	483	168	90	219	—	..	1 989
September quarter	10	6	1 152	430	142	86	184	—	..	2 010
December quarter	11	15	1 462	289	139	40	242	1	..	2 198
2000										
March quarter	15	5	1 328	99	130	37	85	1	..	1 699
June quarter	14	12	934	2	140	23	98	—	..	1 223
April	4	2	350	—	36	14	29	—	..	435
May	8	4	332	—	56	6	37	—	..	443
June	2	6	252	2	48	3	32	—	..	345
Other sentenced										
1998	7 173	3 192	9 434	2 215	2 634	715	1 021	130	..	26 384
1999	8 293	3 959	10 854	1 537	3 373	610	896	115	..	29 522
1999										
June quarter	2 087	949	2 406	363	869	166	213	26	..	7 053
September quarter	2 207	1 099	2 632	392	814	138	183	25	..	7 465
December quarter	2 088	1 006	3 248	345	783	162	208	42	..	7 840
2000										
March quarter	2 114	919	2 674	339	865	131	229	22	..	7 271
June quarter	1 917	1 029	2 374	297	861	150	178	44	..	6 806
April	564	316	756	106	250	42	44	13	..	2 078
May	693	382	889	112	295	63	63	19	..	2 497
June	660	331	729	79	316	45	71	12	..	2 231
Total sentenced										
1998	7 228	3 262	13 247	4 025	3 167	1 007	1 845	135	..	33 781
1999	8 337	4 006	15 550	3 249	4 017	877	1 835	118	..	37 871
1999										
June quarter	2 099	960	3 412	846	1 037	256	432	26	..	9 042
September quarter	2 217	1 105	3 784	822	956	224	367	25	..	9 475
December quarter	2 099	1 021	4 710	634	922	202	450	43	..	10 038
2000										
March quarter	2 129	924	4 002	438	995	168	314	23	..	8 970
June quarter	1 931	1 041	3 308	299	1 001	173	276	44	..	8 029
April	568	318	1 106	106	286	56	73	13	..	2 513
May	701	386	1 221	112	351	69	100	19	..	2 940
June	662	337	981	81	364	48	103	12	..	2 576

(a) For the March and June quarters in 1998, persons reclassified from unsentenced to sentenced status during the month were not included in the reception figures for Victoria. Information on sentenced receptions for Victoria for these two quarters is therefore not comparable with information for other States and Territories. From July 1998 persons reclassified from unsentenced to sentenced status have been included and Victorian information is thus comparable for subsequent quarters.

(b) Persons sentenced to full-time custody in the ACT are held in NSW prisons. The figures are a subset of the NSW figures and are NOT included in the totals for Australia—see Explanatory Notes, paragraph 14.

4

SENTENCED RECEPTIONS INTO PRISON CUSTODY, By Type of Sentence *continued*

Sentence type	NSW	Vic.(a)	Qld	SA	WA	Tas.	NT	ACT in NSW(b)	ACT	Aust.(b)
RATE PER 100,000 ADULT POPULATION										
Fine default only										
1998	1.2	2.0	147.1	160.5	39.7	82.2	619.0	2.1	..	52.5
1999	0.9	1.3	177.8	150.8	47.0	74.9	693.8	1.3	..	58.3
1999										
June quarter	0.3	0.3	38.2	42.6	12.3	25.3	162.2	—	..	13.9
September quarter	0.2	0.2	43.5	37.8	10.3	24.1	135.5	—	..	14.0
December quarter	0.2	0.4	55.0	25.4	10.1	11.2	177.4	0.4	..	15.3
2000										
March quarter	0.3	0.1	49.7	8.7	9.4	10.4	62.1	0.4	..	11.8
June quarter	0.3	0.3	34.8	0.2	10.0	6.5	71.2	—	..	8.4
April	0.1	0.1	13.0	—	2.6	3.9	21.1	—	..	3.0
May	0.2	0.1	12.4	—	4.0	1.7	26.9	—	..	3.1
June	—	0.2	9.4	0.2	3.4	0.8	23.2	—	..	2.4
Other sentenced										
1998	151.4	89.5	364.1	196.3	196.1	201.4	767.1	55.7	..	187.3
1999	172.5	109.5	411.0	135.3	246.1	171.5	662.3	49.0	..	206.5
1999										
June quarter	43.5	26.3	91.3	32.0	63.5	46.7	157.8	11.1	..	49.4
September quarter	45.8	30.3	99.5	34.4	59.3	38.8	134.8	10.7	..	52.1
December quarter	43.2	27.7	122.2	30.3	56.7	45.5	152.5	17.8	..	54.6
2000										
March quarter	43.6	25.2	100.1	29.7	62.3	36.8	167.2	9.5	..	50.4
June quarter	39.4	28.1	88.4	26.0	61.8	42.1	129.3	18.9	..	47.0
April	11.6	8.6	28.2	9.3	17.9	11.8	32.0	5.6	..	14.4
May	14.2	10.4	33.1	9.8	21.2	17.7	45.8	8.2	..	17.2
June	13.6	9.0	27.2	6.9	22.7	12.6	51.6	5.2	..	15.4
Total sentenced										
1998	152.5	91.4	511.2	356.7	235.8	283.7	1 386.1	57.8	..	239.7
1999	173.4	110.8	588.8	286.2	293.1	246.5	1 356.1	47.3	..	264.7
1999										
June quarter	43.7	26.6	129.5	74.6	75.8	72.0	320.0	11.1	..	63.3
September quarter	46.0	30.5	143.0	72.2	69.6	62.9	270.3	10.7	..	66.1
December quarter	43.5	28.1	177.2	55.7	66.8	56.8	329.9	18.2	..	69.8
2000										
March quarter	43.9	25.3	149.8	38.4	71.7	47.2	229.2	9.9	..	62.2
June quarter	39.7	28.4	123.2	26.2	71.8	48.5	200.4	18.9	..	55.5
April	11.7	8.7	41.2	9.3	20.5	15.7	53.0	5.6	..	17.4
May	14.4	10.5	45.5	9.8	25.2	19.4	72.6	8.2	..	20.3
June	13.6	9.2	36.5	7.1	26.1	13.5	74.8	5.2	..	17.8

(a) For the March and June quarters in 1998, persons reclassified from unsentenced to sentenced status during the month were not included in the reception figures for Victoria. Information on sentenced receptions for Victoria for these two quarters is therefore not comparable with information for other States and Territories. From July 1998 persons reclassified from unsentenced to sentenced status have been included and Victorian information is thus comparable for subsequent quarters.

(b) Persons sentenced to full-time custody in the ACT are held in NSW prisons. The figures are a subset of the NSW figures and are NOT included in the totals for Australia—see Explanatory Notes, paragraph 14.

5

INDIGENOUS PERSONS IN PRISON CUSTODY, By Sex(a)(b)(g)

Sex	NSW(c)	Vic.(c)	Qld	SA	WA	Tas.	NT	ACT in NSW(c)(d)	ACT(e)	Aust.(d)
NUMBER ON FIRST DAY OF MONTH										
Males										
1998(f)	n.a.	n.a.	999	198	715	29	421	n.a.	5	n.a.
1999(f)	n.a.	115	1 044	191	883	36	430	n.a.	6	n.a.
1999										
June quarter(f)	n.a.	122	1 034	191	912	39	464	n.a.	7	n.a.
September quarter(f)	1 066	113	1 055	199	908	33	427	n.a.	4	3 805
December quarter(f)	1 031	109	1 058	181	877	36	381	n.a.	5	3 677
2000										
March quarter(f)	1 035	122	1 047	162	857	42	396	n.a.	7	3 668
June quarter(f)	1 051	126	1 027	196	894	39	385	7	6	3 724
April	1 056	127	1 039	196	896	41	400	7	6	3 761
May	1 049	125	1 029	197	891	39	385	7	5	3 720
June	1 049	125	1 014	194	894	37	371	6	6	3 690
Females										
1998(f)	n.a.	n.a.	67	15	71	2	18	n.a.	—	n.a.
1999(f)	n.a.	8	71	14	94	2	17	n.a.	1	n.a.
1999										
June quarter(f)	n.a.	6	70	15	99	1	19	n.a.	1	n.a.
September quarter(f)	101	8	70	14	99	1	17	n.a.	1	312
December quarter(f)	101	7	76	13	88	2	13	n.a.	1	301
2000										
March quarter(f)	108	7	87	10	98	1	11	n.a.	1	323
June quarter(f)	107	11	80	11	98	1	9	2	1	319
April	106	9	91	7	96	1	9	2	—	319
May	105	12	74	10	93	2	11	2	1	308
June	109	13	76	16	104	1	8	3	2	329
Persons										
1998(f)	n.a.	n.a.	1 065	213	785	30	439	n.a.	5	n.a.
1999(f)	n.a.	122	1 116	205	977	37	447	n.a.	7	n.a.
1999										
June quarter(f)	n.a.	128	1 104	206	1 011	41	483	n.a.	8	n.a.
September quarter(f)	1 167	122	1 126	214	1 006	34	444	n.a.	5	4 116
December quarter(f)	1 132	116	1 134	194	965	38	394	n.a.	6	3 978
2000										
March quarter(f)	1 143	129	1 134	172	956	43	408	n.a.	7	3 991
June quarter(f)	1 158	137	1 108	207	991	40	395	9	7	4 042
April	1 162	136	1 130	203	992	42	409	9	6	4 080
May	1 154	137	1 103	207	984	41	396	9	6	4 028
June	1 158	138	1 090	210	998	38	379	9	8	4 019

(a) Some rates and ratios in this table have not been published—see Explanatory Notes, paragraph 22.

(b) Persons in custody are asked their Indigenous status during reception into custody—see Explanatory Notes, paragraphs 11-13.

(c) Numbers of Indigenous persons for NSW prior to September 1999, and numbers of Indigenous persons for Vic. in 1998, are unavailable—see Explanatory Notes, paragraph 10.

(d) Persons sentenced to full-time custody in the ACT are held in NSW prisons. The figures are a subset of the NSW figures and are NOT included in the totals for Australia—see Explanatory Notes, paragraph 14.

(e) Refers to unsentenced persons in ACT prison custody—see Explanatory Notes, paragraph 14.

(f) Figures for the quarter and year for first day of the month counts are calculated as a simple average—see Explanatory Notes, paragraph 5.

(g) See Appendix - Interpretation of Indigenous Statistics

Sex	NSW(c)	Vic.(c)	Qld	SA	WA	Tas.	NT	ACT in NSW(c)(d)	ACT(e)	Aust.(d)
RATE PER 100,000 ADULT INDIGENOUS POPULATION										
Males										
1998(f)	n.a.	n.a.	3 470.0	3 354.9	4 710.4	675.9	2 802.2	n.a.	584.1	n.a.
1999(f)	n.a.	1 727.9	3 504.6	3 178.8	5 662.1	814.4	2 772.1	n.a.	610.3	n.a.
1999										
June quarter(f)	n.a.	1 834.1	3 444.6	3 164.1	5 819.3	896.4	2 973.6	n.a.	n.p.	n.a.
September quarter(f)	3 588.3	1 699.2	3 515.7	3 307.9	5 791.6	744.5	2 736.5	n.a.	n.p.	3 491.0
December quarter(f)	3 471.6	1 634.2	3 523.4	3 003.7	5 593.8	828.0	2 439.5	n.a.	n.p.	3 373.9
2000										
March quarter(f)	3 400.1	1 782.4	3 384.7	2 644.0	5 341.3	922.8	2 477.1	n.a.	n.p.	3 280.6
June quarter(f)	3 453.8	1 841.0	3 320.1	3 193.5	5 567.7	863.8	2 408.3	n.p.	n.p.	3 330.4
April	3 469.1	1 860.5	3 357.8	3 199.0	5 582.2	908.1	2 500.0	n.p.	n.p.	3 363.7
May	3 446.1	1 831.2	3 325.5	3 215.3	5 551.1	863.8	2 406.3	n.p.	n.p.	3 327.1
June	3 446.1	1 831.2	3 277.0	3 166.3	5 569.7	819.5	2 318.8	n.p.	n.p.	3 300.2
Females										
1998(f)	n.a.	n.a.	211.9	234.0	436.7	37.0	110.1	n.a.	—	n.a.
1999(f)	n.a.	108.3	218.8	211.3	566.2	36.0	100.4	n.a.	98.0	n.a.
1999										
June quarter(f)	n.a.	81.5	214.1	222.3	589.5	n.p.	113.5	n.a.	n.p.	n.a.
September quarter(f)	310.8	119.9	215.1	212.4	589.5	n.p.	103.4	n.a.	n.p.	264.6
December quarter(f)	309.7	100.7	232.5	197.6	525.8	n.p.	79.0	n.a.	n.p.	255.9
2000										
March quarter(f)	323.9	103.8	257.4	139.3	574.9	n.p.	67.4	n.a.	n.p.	267.6
June quarter(f)	320.9	160.4	238.6	158.6	571.0	27.6	55.5	n.p.	n.p.	264.0
April	318.9	127.4	270.3	100.9	561.2	20.7	53.5	n.p.	n.p.	264.3
May	315.9	169.8	219.8	144.2	543.7	41.5	65.4	n.p.	n.p.	255.2
June	328.0	184.0	225.7	230.6	608.0	20.7	47.6	n.p.	n.p.	272.6
Persons										
1998(f)	n.a.	n.a.	1 769.7	1 719.1	2 502.6	346.1	1 417.7	n.a.	278.6	n.a.
1999(f)	n.a.	900.7	1 791.2	1 613.2	3 030.2	412.8	1 402.7	n.a.	339.2	n.a.
1999										
June quarter(f)	n.a.	939.9	1 760.5	1 609.9	3 118.6	448.7	1 506.0	n.a.	n.p.	n.a.
September quarter(f)	1 875.7	893.4	1 795.0	1 672.5	3 105.2	371.5	1 385.3	n.a.	n.p.	1 815.3
December quarter(f)	1 819.5	851.8	1 807.8	1 521.2	2 976.6	423.0	1 228.3	n.a.	n.p.	1 754.4
2000										
March quarter(f)	1 794.5	928.5	1 755.1	1 314.0	2 882.3	460.4	1 242.0	n.a.	n.p.	1 716.5
June quarter(f)	1 818.6	986.1	1 714.4	1 582.0	2 989.9	431.8	1 202.4	n.p.	n.p.	1 738.6
April	1 824.9	978.9	1 749.0	1 553.9	2 991.9	449.7	1 246.1	n.p.	n.p.	1 754.8
May	1 812.3	986.1	1 707.2	1 584.5	2 967.8	439.0	1 206.5	n.p.	n.p.	1 732.4
June	1 818.6	993.3	1 687.0	1 607.5	3 010.0	406.9	1 154.7	n.p.	n.p.	1 728.6

(a) Some rates and ratios in this table have not been published—see Explanatory Notes, paragraph 22.

(b) Persons in custody are asked their Indigenous status during reception into custody—see Explanatory Notes, paragraphs 11-13.

(c) Numbers of Indigenous persons for NSW prior to September 1999, and numbers of Indigenous persons for Vic. in 1998, are unavailable—see Explanatory Notes, paragraph 10.

(d) Persons sentenced to full-time custody in the ACT are held in NSW prisons. The figures are a subset of the NSW figures and are NOT included in the totals for Australia—see Explanatory Notes, paragraph 14.

(e) Refers to unsentenced persons in ACT prison custody—see Explanatory Notes, paragraph 14.

(f) Figures for the quarter and year for first day of the month counts are calculated as a simple average—see Explanatory Notes, paragraph 5.

(g) See Appendix - Interpretation of Indigenous Statistics

Sex	NSW(c)	Vic.(c)	Qld	SA	WA	Tas.	NT	ACT in NSW(c)(d)	ACT(e)	Aust.(d)
RATIO OF INDIGENOUS TO NON-INDIGENOUS RATES OF IMPRISONMENT										
Males										
1998(f)	n.a.	n.a.	12.2	16.3	20.6	4.4	9.9	n.a.	27.4	n.a.
1999(f)	n.a.	11.5	12.1	15.9	21.2	4.9	10.4	n.a.	23.4	n.a.
1999										
June quarter(f)	n.a.	12.4	11.6	15.8	21.6	5.3	11.5	n.a.	n.p.	n.a.
September quarter(f)	14.5	11.3	12.4	16.3	20.8	4.4	10.1	n.a.	n.p.	15.6
December quarter(f)	14.1	10.4	12.3	15.3	20.7	5.3	7.9	n.a.	n.p.	15.1
2000										
March quarter(f)	13.9	11.6	12.0	13.7	19.7	6.0	6.5	n.a.	n.p.	14.7
June quarter(f)	14.0	11.7	12.1	16.5	20.2	4.8	5.8	n.p.	n.p.	14.9
April	14.0	11.9	12.1	16.4	20.5	5.8	6.2	n.p.	n.p.	15.0
May	13.9	11.7	12.1	16.7	20.3	4.6	6.0	n.p.	n.p.	14.8
June	14.0	11.5	12.2	16.4	19.9	4.3	5.3	n.p.	n.p.	14.7
Females										
1998(f)	n.a.	n.a.	13.3	21.0	31.4	n.p.	5.0	n.a.	—	n.a.
1999(f)	n.a.	11.6	12.2	20.7	32.0	2.2	6.8	n.a.	36.5	n.a.
1999										
June quarter(f)	n.a.	8.7	11.9	22.3	33.7	n.p.	4.9	n.a.	n.p.	n.a.
September quarter(f)	22.4	12.9	11.9	21.5	31.9	n.p.	6.3	n.a.	n.p.	20.0
December quarter(f)	22.5	10.5	12.4	18.5	28.1	n.p.	9.3	n.a.	n.p.	18.8
2000										
March quarter(f)	23.2	10.7	13.6	13.4	31.4	n.p.	5.0	n.a.	n.p.	19.5
June quarter(f)	21.9	16.2	14.6	17.0	27.0	2.5	6.6	n.p.	n.p.	19.4
April	22.1	12.9	16.2	10.2	27.8	1.8	4.2	n.p.	n.p.	19.4
May	21.6	16.8	13.5	17.0	25.3	3.7	10.3	n.p.	n.p.	18.8
June	22.1	18.9	14.0	24.2	27.7	2.1	7.5	n.p.	n.p.	20.0
Persons										
1998(f)	n.a.	n.a.	11.8	16.0	20.4	4.4	8.1	n.a.	9.3	n.a.
1999(f)	n.a.	11.5	11.7	15.6	21.3	4.8	9.1	n.a.	24.2	n.a.
1999										
June quarter(f)	n.a.	12.2	11.3	15.7	21.7	5.1	9.9	n.a.	n.p.	n.a.
September quarter(f)	14.6	11.4	11.9	16.0	20.9	4.3	8.9	n.a.	n.p.	15.5
December quarter(f)	14.2	10.4	11.9	15.0	20.6	5.1	7.1	n.a.	n.p.	14.9
2000										
March quarter(f)	14.1	11.6	11.7	13.2	19.9	5.6	5.8	n.a.	n.p.	14.7
June quarter(f)	14.1	12.0	11.9	15.9	20.2	4.7	5.2	n.p.	n.p.	14.8
April	14.1	12.0	11.9	15.5	20.4	5.5	5.5	n.p.	n.p.	14.9
May	14.0	12.1	11.8	16.1	20.1	4.5	5.4	n.p.	n.p.	14.8
June	14.1	12.0	11.9	16.2	20.0	4.1	4.7	n.p.	n.p.	14.7

- (a) Some rates and ratios in this table have not been published—see Explanatory Notes, paragraph 22.
- (b) Persons in custody are asked their Indigenous status during reception into custody—see Explanatory Notes, paragraphs 11-13.
- (c) Numbers of Indigenous persons for NSW prior to September 1999, and numbers of Indigenous persons for Vic. in 1998, are unavailable—see Explanatory Notes, paragraph 10.
- (d) Persons sentenced to full-time custody in the ACT are held in NSW prisons. The figures are a subset of the NSW figures and are NOT included in the totals for Australia—see Explanatory Notes, paragraph 14.
- (e) Refers to unsentenced persons in ACT prison custody—see Explanatory Notes, paragraph 14.
- (f) Figures for the quarter and year for first day of the month counts are calculated as a simple average—see Explanatory Notes, paragraph 5.
- (g) See Appendix - Interpretation of Indigenous Statistics

6

INDIGENOUS PERSONS IN PRISON CUSTODY, By Legal Status and Sentence Type(a)(b)(g)

Legal status and sentence type	NSW(c)	Vic.(c)	Qld	SA	WA	Tas.	NT	ACT in NSW(c)(d)	ACT(e)	Aust.(d)
NUMBER ON FIRST DAY OF MONTH										
Unsentenced										
1998(f)	n.a.	n.a.	102	50	97	5	51	..	5	n.a.
1999(f)	n.a.	24	124	52	124	8	53	n.a.	7	n.a.
1999										
June quarter(f)	n.a.	27	117	52	119	7	58	n.a.	8	n.a.
September quarter(f)	191	20	122	54	116	9	42	n.a.	5	558
December quarter(f)	193	21	136	43	124	8	44	n.a.	6	576
2000										
March quarter(f)	211	23	159	52	121	9	52	n.a.	7	635
June quarter(f)	217	27	162	69	145	8	59	1	7	694
April	201	22	163	70	138	6	55	1	6	661
May	217	28	165	68	155	9	62	1	6	710
June	232	30	159	70	141	9	61	—	8	710
Sentenced										
Fine default only										
1998(f)	n.a.	n.a.	46	14	20	—	13	n.a.	..	n.a.
1999(f)	n.a.	—	54	9	34	1	17	n.a.	..	n.a.
1999										
June quarter(f)	n.a.	—	45	10	41	2	19	n.a.	..	n.a.
September quarter(f)	—	—	45	7	30	—	15	n.a.	..	97
December quarter(f)	—	—	74	6	22	1	14	n.a.	..	116
2000										
March quarter(f)	—	—	66	2	21	—	9	n.a.	..	99
June quarter(f)	—	—	59	—	27	1	10	—	..	97
April	—	—	72	—	24	1	9	—	..	106
May	—	—	58	—	23	1	9	—	..	91
June	—	—	47	—	34	—	12	—	..	93
Other sentenced										
1998(f)	n.a.	n.a.	917	150	669	25	374	n.a.	..	n.a.
1999(f)	n.a.	98	937	144	819	29	378	n.a.	..	n.a.
1999										
June quarter(f)	n.a.	101	941	144	850	32	406	n.a.	..	n.a.
September quarter(f)	976	102	959	152	861	24	387	n.a.	..	3 461
December quarter(f)	938	95	924	145	819	30	335	n.a.	..	3 286
2000										
March quarter(f)	931	106	909	117	814	34	346	n.a.	..	3 257
June quarter(f)	941	110	886	137	820	32	325	8	..	3 252
April	961	114	895	133	830	35	345	8	..	3 313
May	937	109	880	139	806	31	325	8	..	3 227
June	926	108	884	140	823	29	306	9	..	3 216

(a) Some rates in this table have not been published—see Explanatory Notes, paragraph 22.

(b) Persons in custody are asked their Indigenous status during reception into custody—see Explanatory Notes, paragraphs 11-13.

(c) Numbers of Indigenous persons for NSW prior to September 1999, and numbers of Indigenous persons for Vic. in 1998, are unavailable—see Explanatory Notes, paragraph 10.

(d) Persons sentenced to full-time custody in the ACT are held in NSW prisons. The figures are a subset of the NSW figures and are NOT included in the totals for Australia—see Explanatory Notes, paragraph 14.

(e) Refers to unsentenced persons in ACT prison custody—see Explanatory Notes, paragraph 14.

(f) Figures for the quarter and year for first day of the month counts are calculated as a simple average—see Explanatory Notes, paragraph 5.

(g) See Appendix - Interpretation of Indigenous Statistics

6 INDIGENOUS PERSONS IN PRISON CUSTODY, By Legal Status and Sentence Type(a)(b)(g) *continued*

Legal status and sentence type	NSW(c)	Vic.(c)	Qld	SA	WA	Tas.	NT	ACT in NSW(c)(d)	ACT(e)	Aust.(d)
NUMBER ON FIRST DAY OF MONTH										
Total sentenced										
1998(f)	n.a.	n.a.	963	163	688	26	388	n.a.	..	n.a.
1999(f)	n.a.	98	991	153	853	30	394	n.a.	..	n.a.
1999										
June quarter(f)	n.a.	101	987	154	891	34	425	n.a.	..	n.a.
September quarter(f)	976	102	1 004	159	891	24	402	n.a.	..	3 558
December quarter(f)	939	95	997	151	841	31	349	n.a.	..	3 403
2000										
March quarter(f)	932	106	975	119	835	34	356	n.a.	..	3 356
June quarter(f)	941	110	945	137	847	32	335	8	..	3 349
April	961	114	967	133	854	36	354	8	..	3 419
May	937	109	938	139	829	32	334	8	..	3 318
June	926	108	931	140	857	29	318	9	..	3 309
Total										
1998(f)	n.a.	n.a.	1 065	213	785	30	439	n.a.	5	n.a.
1999(f)	n.a.	122	1 116	205	977	37	447	n.a.	7	n.a.
1999										
June quarter(f)	n.a.	128	1 104	206	1 011	41	483	n.a.	8	n.a.
September quarter(f)	1 167	122	1 126	214	1 006	34	444	n.a.	5	4 116
December quarter(f)	1 132	116	1 134	194	965	38	394	n.a.	6	3 978
2000										
March quarter(f)	1 143	129	1 134	172	956	43	408	n.a.	7	3 991
June quarter(f)	1 158	137	1 108	207	991	40	395	9	7	4 042
April	1 162	136	1 130	203	992	42	409	9	6	4 080
May	1 154	137	1 103	207	984	41	396	9	6	4 028
June	1 158	138	1 090	210	998	38	379	9	8	4 019

- (a) Some rates in this table have not been published—see Explanatory Notes, paragraph 22.
- (b) Persons in custody are asked their Indigenous status during reception into custody—see Explanatory Notes, paragraphs 11-13.
- (c) Numbers of Indigenous persons for NSW prior to September 1999, and numbers of Indigenous persons for Vic. in 1998, are unavailable—see Explanatory Notes, paragraph 10.
- (d) Persons sentenced to full-time custody in the ACT are held in NSW prisons. The figures are a subset of the NSW figures and are NOT included in the totals for Australia—see Explanatory Notes, paragraph 14.
- (e) Refers to unsentenced persons in ACT prison custody—see Explanatory Notes, paragraph 14.
- (f) Figures for the quarter and year for first day of the month counts are calculated as a simple average—see Explanatory Notes, paragraph 5.
- (g) See Appendix - Interpretation of Indigenous Statistics

Legal status and sentence type	NSW(c)	Vic.(c)	Qld	SA	WA	Tas.	NT	ACT in NSW(c)(d)	ACT(e)	Aust.(d)
RATES PER 100,000 ADULT INDIGENOUS POPULATION										
Unsentenced										
1998(f)	n.a.	n.a.	169.3	403.0	309.6	52.4	164.1	..	278.6	n.a.
1999(f)	n.a.	175.2	199.4	408.1	384.5	84.2	165.3	n.a.	339.2	n.a.
1999										
June quarter(f)	n.a.	200.7	187.1	407.0	368.2	73.6	181.0	n.a.	n.p.	n.a.
September quarter(f)	306.5	146.9	194.0	422.7	356.9	103.0	132.1	n.a.	n.p.	246.2
December quarter(f)	310.3	156.6	217.4	339.2	381.6	84.6	138.3	n.a.	n.p.	253.9
2000										
March quarter(f)	331.4	163.2	246.6	400.6	364.9	99.9	158.4	n.a.	n.p.	273.1
June quarter(f)	340.3	191.9	251.3	530.7	436.3	85.7	180.8	n.p.	n.p.	298.3
April	315.7	158.4	252.3	535.8	416.2	64.2	167.6	n.p.	n.p.	284.3
May	340.8	201.5	255.4	520.5	467.5	96.4	188.9	n.p.	n.p.	305.4
June	364.3	215.9	246.1	535.8	425.3	96.4	185.8	n.p.	n.p.	305.4
Sentenced										
Fine default only										
1998(f)	n.a.	n.a.	76.2	108.9	61.9	2.8	43.1	n.a.	..	n.a.
1999(f)	n.a.	—	87.1	70.3	105.9	4.6	52.6	n.a.	..	n.a.
1999										
June quarter(f)	n.a.	—	72.3	78.3	127.5	n.p.	58.2	n.a.	..	n.a.
September quarter(f)	0.5	—	72.3	57.4	91.5	—	45.8	n.a.	..	42.9
December quarter(f)	0.5	—	117.5	44.4	66.9	n.p.	44.7	n.a.	..	51.3
2000										
March quarter(f)	0.5	—	102.2	17.9	63.3	—	28.4	n.a.	..	42.6
June quarter(f)	—	—	91.3	—	81.4	7.1	30.5	—	..	41.6
April	—	—	111.4	—	72.4	10.7	27.4	—	..	45.6
May	—	—	89.8	—	69.4	10.7	27.4	—	..	39.1
June	—	—	72.7	—	102.5	—	36.6	—	..	40.0
Other sentenced										
1998(f)	n.a.	n.a.	1 524.2	1 207.2	2 131.0	290.9	1 210.6	n.a.	..	n.a.
1999(f)	n.a.	725.5	1 504.7	1 134.8	2 539.8	321.2	1 185.2	n.a.	..	n.a.
1999										
June quarter(f)	n.a.	739.2	1 501.1	1 124.6	2 622.8	353.1	1 266.8	n.a.	..	n.a.
September quarter(f)	1 568.6	746.5	1 528.7	1 192.4	2 656.8	268.5	1 207.5	n.a.	..	1 526.1
December quarter(f)	1 508.6	695.1	1 472.9	1 137.6	2 528.2	331.0	1 045.2	n.a.	..	1 449.2
2000										
March quarter(f)	1 462.6	765.4	1 406.4	895.6	2 454.1	360.5	1 055.2	n.a.	..	1 400.8
June quarter(f)	1 478.3	794.2	1 371.8	1 051.2	2 472.2	339.0	991.2	n.p.	..	1 398.7
April	1 509.2	820.6	1 385.2	1 018.1	2 503.3	374.7	1 051.1	n.p.	..	1 424.9
May	1 471.5	784.6	1 362.0	1 064.0	2 430.9	331.9	990.2	n.p.	..	1 387.9
June	1 454.2	777.4	1 368.2	1 071.6	2 482.2	310.5	932.3	n.p.	..	1 383.2

(a) Some rates in this table have not been published—see Explanatory Notes, paragraph 22.

(b) Persons in custody are asked their Indigenous status during reception into custody—see Explanatory Notes, paragraphs 11-13.

(c) Numbers of Indigenous persons for NSW prior to September 1999, and numbers of Indigenous persons for Vic. in 1998, are unavailable—see Explanatory Notes, paragraph 10.

(d) Persons sentenced to full-time custody in the ACT are held in NSW prisons. The figures are a subset of the NSW figures and are NOT included in the totals for Australia—see Explanatory Notes, paragraph 14.

(e) Refers to unsentenced persons in ACT prison custody—see Explanatory Notes, paragraph 14.

(f) Figures for the quarter and year for first day of the month counts are calculated on a simple average—see Explanatory Notes, paragraph 5.

(g) See Appendix - Interpretation of Indigenous Statistics

6 INDIGENOUS PERSONS IN PRISON CUSTODY, By Legal Status and Sentence Type(a)(b)(g) *continued*

Legal status and sentence type	NSW(c)	Vic.(c)	Qld	SA	WA	Tas.	NT	ACT in NSW(c)(d)	ACT(e)	Aust.(d)
RATES PER 100,000 ADULT INDIGENOUS POPULATION										
Total sentenced										
1998(f)	n.a.	n.a.	1 600.4	1 316.1	2 193.0	293.7	1 253.6	n.a.	..	n.a.
1999(f)	n.a.	725.5	1 591.8	1 205.1	2 645.7	328.6	1 237.9	n.a.	..	n.a.
1999										
June quarter(f)	n.a.	739.2	1 573.4	1 202.9	2 750.3	375.2	1 325.0	n.a.	..	n.a.
September quarter(f)	1 569.1	746.5	1 601.0	1 249.8	2 748.3	268.5	1 253.3	n.a.	..	1 569.0
December quarter(f)	1 509.2	695.1	1 590.4	1 182.0	2 595.0	338.4	1 090.0	n.a.	..	1 500.5
2000										
March quarter(f)	1 463.1	765.4	1 508.5	913.5	2 517.4	360.5	1 083.6	n.a.	..	1 443.4
June quarter(f)	1 478.3	794.2	1 463.1	1 051.2	2 553.6	346.2	1 021.6	n.p.	..	1 440.2
April	1 509.2	820.6	1 496.7	1 018.1	2 575.7	385.4	1 078.5	n.p.	..	1 470.5
May	1 471.5	784.6	1 451.8	1 064.0	2 500.3	342.6	1 017.6	n.p.	..	1 427.1
June	1 454.2	777.4	1 441.0	1 071.6	2 584.8	310.5	968.8	n.p.	..	1 423.2
Total										
1998(f)	n.a.	n.a.	1 769.7	1 719.1	2 502.6	346.1	1 417.7	n.a.	278.6	n.a.
1999(f)	n.a.	900.7	1 791.2	1 613.2	3 030.2	412.8	1 402.7	n.a.	339.2	n.a.
1999										
June quarter(f)	n.a.	939.9	1 760.5	1 609.9	3 118.6	448.7	1 506.0	n.a.	n.p.	n.a.
September quarter(f)	1 875.7	893.4	1 795.0	1 672.5	3 105.2	371.5	1 385.3	n.a.	n.p.	1 815.3
December quarter(f)	1 819.5	851.8	1 807.8	1 521.2	2 976.6	423.0	1 228.3	n.a.	n.p.	1 754.4
2000										
March quarter(f)	1 794.5	928.5	1 755.1	1 314.0	2 882.3	460.4	1 242.0	n.a.	n.p.	1 716.5
June quarter(f)	1 818.6	986.1	1 714.4	1 582.0	2 989.9	431.8	1 202.4	n.p.	n.p.	1 738.6
April	1 824.9	978.9	1 749.0	1 553.9	2 991.9	449.7	1 246.1	n.p.	n.p.	1 754.8
May	1 812.3	986.1	1 707.2	1 584.5	2 967.8	439.0	1 206.5	n.p.	n.p.	1 732.4
June	1 818.6	993.3	1 687.0	1 607.5	3 010.0	406.9	1 154.7	n.p.	n.p.	1 728.6

- (a) Some rates in this table have not been published—see Explanatory Notes, paragraph 22.
- (b) Persons in custody are asked their Indigenous status during reception into custody—see Explanatory Notes, paragraphs 11-13.
- (c) Numbers of Indigenous persons for NSW prior to September 1999, and numbers of Indigenous persons for Vic. in 1998, are unavailable—see Explanatory Notes, paragraph 10.
- (d) Persons sentenced to full-time custody in the ACT are held in NSW prisons. The figures are a subset of the NSW figures and are NOT included in the totals for Australia—see Explanatory Notes, paragraph 14.
- (e) Refers to unsentenced persons in ACT prison custody—see Explanatory Notes, paragraph 14.
- (f) Figures for the quarter and year for first day of the month counts are calculated on a simple average—see Explanatory Notes, paragraph 5.
- (g) See Appendix - Interpretation of Indigenous Statistics

7

PERSONS IN PERIODIC DETENTION, By Sex(a)

Sex	NSW	ACT	Aust.
AVERAGE DAILY NUMBER			
Males			
1998	1 333	70	1 403
1999	1 190	62	1 252
1999			
June quarter	1 154	63	1 218
September quarter	1 107	64	1 171
December quarter	1 206	61	1 266
2000			
March quarter	1 160	63	1 223
June quarter	1 154	66	1 220
April	1 142	64	1 206
May	1 167	66	1 233
June	1 153	68	1 221
Females			
1998	123	5	129
1999	114	3	117
1999			
June quarter	111	4	115
September quarter	110	2	112
December quarter	115	4	119
2000			
March quarter	112	5	117
June quarter	110	6	116
April	110	6	116
May	110	5	115
June	110	6	116
Persons			
1998	1 457	75	1 531
1999	1 304	65	1 369
1999			
June quarter	1 265	67	1 332
September quarter	1 217	67	1 283
December quarter	1 321	65	1 386
2000			
March quarter	1 273	68	1 340
June quarter	1 264	72	1 336
April	1 252	69	1 321
May	1 277	72	1 349
June	1 263	74	1 337

(a) See Glossary for definition of Periodic detention. In 1998 and 1999 this was a type of custody used only in NSW and the ACT.

7

PERSONS IN PERIODIC DETENTION, By Sex(a) *continued*

Sex	NSW	ACT	Aust.
RATE PER 100,000 ADULT POPULATION			
Males			
1998	57.3	60.5	20.2
1999	50.3	53.0	17.8
1999			
June quarter	48.9	54.7	17.3
September quarter	46.7	55.4	16.6
December quarter	50.7	52.0	17.9
2000			
March quarter	48.6	55.2	17.2
June quarter	48.2	57.5	17.1
April	47.7	55.4	16.9
May	48.7	57.8	17.3
June	48.1	59.4	17.1
Females			
1998	5.1	4.5	1.8
1999	4.6	2.8	1.6
1999			
June quarter	4.5	3.4	1.6
September quarter	4.5	2.0	1.5
December quarter	4.7	3.4	1.6
2000			
March quarter	4.6	4.0	1.6
June quarter	4.5	4.7	1.6
April	4.5	4.8	1.6
May	4.5	4.4	1.6
June	4.5	4.9	1.6
Persons			
1998	30.7	32.0	10.9
1999	27.1	27.6	9.6
1999			
June quarter	26.4	28.7	9.3
September quarter	25.3	28.4	9.0
December quarter	27.3	27.4	9.6
2000			
March quarter	26.3	29.3	9.3
June quarter	26.0	30.8	9.2
April	25.7	29.8	9.1
May	26.2	30.8	9.3
June	26.0	31.8	9.2

(a) See Glossary for definition of Periodic detention. In 1998 and 1999 this was a type of custody used only in NSW and the ACT.

NUMBER ON FIRST DAY OF MONTH.....

	NSW	Vic.	Qld	SA	WA	Tas.	NT	ACT	Aust.
MALES									
1998(b)	240	59	80	24	70	3	14	3	493
1999(b)	262	72	98	27	101	1	16	4	581
1999									
June quarter(b)	257	70	104	31	90	1	15	5	573
September quarter(b)	270	73	102	24	113	1	20	4	608
December quarter(b)	278	81	93	25	111	1	17	3	609
2000									
March quarter(b)	287	77	81	27	108	1	17	4	602
June quarter(b)	293	74	88	26	112	2	19	5	619
April	295	77	84	25	106	2	18	5	612
May	295	74	87	28	114	2	17	5	622
June	290	70	93	25	117	2	21	6	624
FEMALES									
1998(b)	24	5	10	4	8	1	1	1	54
1999(b)	31	5	13	4	9	2	2	1	66
1999									
June quarter(b)	30	6	15	5	9	1	3	—	68
September quarter(b)	33	6	14	5	8	3	1	—	70
December quarter(b)	28	6	12	4	7	2	—	1	61
2000									
March quarter(b)	26	6	17	4	10	2	—	1	65
June quarter(b)	29	6	13	6	13	2	—	—	68
April	28	6	16	6	12	1	—	—	69
May	30	6	13	5	13	1	—	—	68
June	29	5	9	6	15	3	—	—	67
PERSONS									
1998(b)	263	64	90	27	79	4	15	4	547
1999(b)	293	78	111	31	110	2	18	5	647
1999									
June quarter(b)	287	76	118	36	99	2	18	5	641
September quarter(b)	303	79	116	29	121	4	21	5	678
December quarter(b)	306	87	105	29	118	3	17	4	669
2000									
March quarter(b)	313	83	98	32	118	2	17	4	667
June quarter(b)	322	79	101	32	126	4	19	5	687
April	323	83	100	31	118	3	18	5	681
May	325	80	100	33	127	3	17	5	690
June	319	75	102	31	132	5	21	6	691

(a) See Glossary for definition of Federal sentenced prisoner. 'ACT in NSW' in other tables refers to prisoners held in NSW and sentenced in the ACT. This table shows prisoners by the State or Territory in which they were sentenced, not where they were held in custody, so 'ACT in NSW' is not shown here.

(b) Figures for the quarter and year for first day of the month counts are calculated as a simple average—see Explanatory Notes, paragraph 5.

EXPLANATORY NOTES

INTRODUCTION

1 This publication presents monthly and quarterly statistical series on persons held in adult corrective services custody in Australia. It contains data on the number of persons in corrective services custody by their sex, type of custody, legal status and sentence type; the number of sentenced persons received into corrective services custody each month; the number of Indigenous persons in corrective services custody by their sex, legal status and sentence type, and the number of federal prisoners each month.

2 Statistics presented in this publication are compiled in three ways:

- Average daily prisoner population: Counts taken on each day of the month are summed and divided by the number of days in that month to determine the average daily prisoner population for that month. The average daily periodic detainee population is a count of persons on periodic detention on each day a centre is open, divided by the number of days a centre is open.
- Sentenced prisoner reception figures: Counts are taken of the number of receptions where a prisoner is received as a sentenced prisoner plus the number of changes of legal status from unsentenced to sentenced.
- First day of the month prisoner population: Counts of prisoner populations, taken on or near the first day of the month (see Explanatory Notes, paragraph 4).

3 Although national standards and classifications are used in the compilation of these statistics, some discrepancies remain between the States and Territories. These are due to legislative and procedural differences between jurisdictions and the way that these differences are reflected in agencies' administrative data systems. As part of its development strategy, the ABS is working with corrective services agencies to minimise the effect of these differences.

REFERENCE PERIOD/DATE

4 For the average daily prisoner population and the sentenced prisoner receptions counts, the reference period is the complete reference month. For all other information in the publication, the reference date is the first day of the month. However, not all States and Territories report strictly according to this 'first day of the month' rule:

- The Western Australian and Victorian prison population and Australian Capital Territory prisoners in New South Wales prisons are counted as at midnight on the last day of the month. In these cases the figures provided are taken to represent the prison population at the beginning of the following month to align with practices in other States and Territories.
- The New South Wales prison population is counted on the first Sunday of the month.
- In January 1999 ACT Corrections commenced sending surplus unsentenced prisoners to New South Wales prisons. Table 3 shows these unsentenced ACT in NSW prisoners on a daily average basis.

5 Calculation of figures for the entire quarter and entire year varies depending on the counting unit and method of counting prisoners, these figures may be subject to rounding:

- Average daily figures: Figures are calculated by weighting the average according to the number of days in each month or year.
- First day of the month: Figures are simple averages. Quarterly figures for each month are added and the total is divided by three; for yearly figures, the figures for each month are added and the total divided by twelve.
- Sentenced receptions: Figures are totals of each month.

EXPLANATORY NOTES *continued*

SCOPE

6 The scope of the statistics in this publication includes all persons remanded or sentenced to adult custodial corrective services agencies in each State and Territory in Australia.

7 In all States and Territories except New South Wales, South Australia, Western Australia and the Australian Capital Territory, persons remanded or sentenced to adult custody are aged 17 years and over. Persons under 17 years are treated as juveniles in most Australian courts and are not remanded or sentenced to custody in adult prisons, other than in exceptional circumstances. However, in New South Wales, South Australia, Western Australia and the Australian Capital Territory 'adult' refers to persons aged 18 years and over.

8 The statistics include persons in Work Outreach Camps and Community Custody Centres in Queensland. In table 1 these persons have been counted on a first day of the month basis for the year 1997. However, the figures in the rest of the table, and the rest of persons in corrective services custody in Queensland, were counted on an average daily basis.

DATA SOURCE

9 Statistics in this publication are derived from information collected by the ABS from administrative records held by corrective services agencies within each State and Territory. Statistics on federal prisoners are derived from records kept by the Criminal Law Division of the Commonwealth Attorney-General's Department.

10 Statistics marked 'n.a.' in tables 3, 5 and 6 are not available for inclusion in this publication. New South Wales Department of Corrective Services modified their computer system to enable provision of counts of Indigenous persons in custody from July 1999. Australian Capital Territory Corrective Services have advised that the numbers of Indigenous prisoners sentenced in Australian Capital Territory courts and held in New South Wales prisons had been under reported. This under reporting was resolved from April 2000. The Victorian computer system was modified to produce counts of Indigenous persons from the first day of March 1998.

INDIGENOUS IDENTIFICATION

11 In all States and Territories persons are asked whether they identify as Aboriginal or Torres Strait Islander during entry into custody. It is uncommon for corrective services agencies to collect Indigenous status information from sources other than the person's own identification.

12 Some persons in custody are recorded as of unknown Indigenous status on corrective services agencies' information systems, but unknown Indigenous status has not been provided for this collection. It is intended that unknown Indigenous status will be collected from these systems in future.

13 Table 5 shows the ratio of Indigenous to non-Indigenous rates of imprisonment. To derive these figures the rates per 100,000 adult non-Indigenous population were calculated as if all those persons not identified as Indigenous are non-Indigenous.

AUSTRALIAN CAPITAL TERRITORY PRISONERS

14 The Australian Capital Territory has a detention centre for unsentenced prisoners and a periodic detention centre, but does not have a facility to hold persons sentenced to full-time custody. Persons sentenced to full-time custody in Australian Capital Territory criminal courts are held in New South Wales prisons. To provide greater understanding of the number of prisoners attributed to the Australian Capital Territory while presenting an accurate picture of the New South Wales prisoner population, statistics relating to Australian Capital Territory prisoners in New South Wales prisons are presented as a subset of the New South Wales figures.

RATES AND RATIOS

15 Imprisonment rates enable comparison of prisoner numbers across States and Territories. Prisoner rates are expressed per 100,000 adult population.

16 For the purpose of this publication the population figures used in the calculation of rates are for persons aged 17 years and over for all States and Territories except New South Wales, South Australia, Western Australia and the Australian Capital Territory where the population used is persons aged 18 and over (see Explanatory Notes, paragraph 7).

17 Rates for the Indigenous adult population in this publication are based on revised projections for 30 June 2000 (refer *Experimental Projections of the Aboriginal and Torres Strait Islander Population 30 June 1996 to 30 June 2006* (Cat. no. 3231.0)). These projections are in turn based on the results of the 1996 Census of Population and Housing.

18 Two series of these projections have been published. The so-called 'higher series' takes into account a possible change in propensity for people to identify themselves as Indigenous since the last Population Census and estimates this from the last inter-censal period. The lower series assumes no such change has taken place since 1996. The lower of the two series was used in calculating rates for the Indigenous adult population in this publication. This is because, after discussions with representatives of Corrective Services agencies, it was felt that the propensity to identify as Indigenous has not increased to the same extent in the prison environment as might have occurred in the wider community.

19 Rates for the total adult prisoner population are calculated using the Estimated Resident Population (ERP) for each of the States and Territories (refer *Population by Age and Sex, Australian States and Territories* (Cat. no. 3201.0)). As the population changes over time the denominator used for the calculation of rates will vary, depending on the reference period. Rates for the March and June quarters in 1997 used ERP for their respective quarters. From the September quarter 1997 to the March quarter 1998 ERP for the September quarter 1997 was used. All subsequent rates were calculated using ERP for two quarters prior to their respective quarters. Thus for the June quarter 2000, ERP for December quarter 1999 was used in calculation of rates. This approach uses the latest ERP available at the time of publication.

EXPLANATORY NOTES *continued*

RATES AND RATIOS *continued*

20 The ratio of imprisonment rates of Indigenous persons to non-Indigenous persons is calculated by dividing the Indigenous imprisonment rate for each period and State or Territory by the corresponding non-Indigenous imprisonment rate.

21 The ratio indicates the extent to which the imprisonment rates of Indigenous persons exceed the imprisonment rates of non-Indigenous persons. A ratio of 20.0 indicates that, for the given State or Territory, the imprisonment rate of Indigenous persons per 100,000 adult population is 20 times that of the imprisonment rate of non-Indigenous persons.

22 In some instances Indigenous rates and ratios have not been published. Where this occurs, the cell concerned contains the symbol 'n.p.' This happens where, firstly, the number of persons in custody is less than 10, and secondly, where the population on which the rate is calculated is less than 5,000. This has been done because such rates and ratios vary widely from month to month with small variations in numbers of persons, and therefore may give an inaccurate reflection of the relative involvement of Indigenous persons in custody.

RELATED PUBLICATIONS

ABS publications

23 Other ABS publications which may be of interest include:

Australian Standard Offence Classification, 1997 (ASOC) (Cat. no. 1234.0)—irregular

Crime and Safety, Australia, April 1998 (Cat. no. 4509.0)—irregular

Higher Criminal Courts, Australia, 1998-1999 (Cat. no. 4513.0)—annual

Prisoners in Australia, 1999 (Cat. No. pending)—annual

Recorded Crime, Australia, 1999, (Cat. no. 4510.0)—annual

24 Current publications produced by the ABS are listed in the *Catalogue of Publications and Products* (Cat. no. 1101.0). The ABS also issues, on Tuesdays and Fridays, a *Release Advice* (Cat. no. 1105.0) which lists publications to be released in the next few days. The *Catalogue* and *Release Advice* are available from any ABS office, and at our website: <http://www.abs.gov.au>.

Non-ABS publications

25 Non-ABS sources which may be of interest include:

Australian Institute of Criminology, *Deaths in Custody, List of Publications* (<http://www.aic.gov.au>)

Crime Research Centre, University of Western Australia, *Crime and Justice Statistics for Western Australia, 1998*

NSW Bureau of Crime Statistics and Research, *Key Trends in Crime and Justice New South Wales, 1997*

Queensland Government Statistician's Office, *Crime and Justice Statistics Queensland, 1997*

UK Home Office Research, Development and Statistics Directorate, *World Prison Population List* (<http://www.homeoffice.gov.uk/rds/areas/prispsf.htm>)

Victoria, Office of the Correctional Services Commissioner, *Statistical Profile: The Victorian Prison System 1995-96 to 1997-98*

APPENDIX Interpretation of Indigenous Statistics

INTRODUCTION

Tables 5 and 6 in this publication provide nationally comparable statistics on imprisonment of Aboriginal and Torres Strait Islander (Indigenous) people. There are a number of issues that bear on the statistical measures of Indigenous imprisonment. This technical appendix provides advice on how these statistics should be interpreted.

NUMBERS

The first and most basic measure of Indigenous imprisonment is the *number of persons imprisoned*. Imprisoned persons are classified as Indigenous if they identify themselves as Aboriginal or Torres Strait Islander at the time they are received into prison custody. These statistics in *Corrective Services Australia* are derived from administrative records held by corrective services agencies in each jurisdiction. The accuracy of the Indigenous component of the statistics is dependent upon the quality of the information collected by these agencies.

PROPORTIONS

The second measure is the Indigenous *proportion of the prisoner population*. This relates the number of Indigenous persons in custody to the total number of persons in custody, and provides a basis for comparing the composition of the prison population across jurisdictions.

RATES

The third measure of Indigenous imprisonment provided in *Corrective Services Australia* is the *rate of imprisonment*, that is; the number of Indigenous prisoners per 100,000 adults in the Indigenous population. The number of persons imprisoned in any jurisdiction is partly a function of the size of the population in that jurisdiction. All other things being equal, a jurisdiction such as the Northern Territory with a large Indigenous population will have a larger number of Indigenous prisoners than a jurisdiction such as Tasmania with a small Indigenous population. The rate of imprisonment provides a basis for comparing the relative likelihood that any Indigenous adult in a State or Territory will be imprisoned.

RATIOS

The fourth measure of Indigenous imprisonment is the *ratio of Indigenous to non-Indigenous imprisonment*. Australian States and Territories have widely varying rates of imprisonment and the likelihood that any Indigenous adult will be imprisoned is partly a function of the overall likelihood of imprisonment. This ratio provides a measure of how much more likely it is that an Indigenous adult in a particular jurisdiction will be imprisoned compared with his or her non-Indigenous counterparts.

GLOSSARY

Corrective services custody	Confinement in a place intended primarily for the purpose of confining prisoners, such as a prison, prison farm, Periodic Detention Centre or Community Custody Centre.
Federal sentenced prisoner	Persons charged and sentenced under a Commonwealth statute. For the purposes of this publication federal sentenced prisoners are those persons who are recognised by the Criminal Law Division of the Commonwealth Attorney-General's Department as having been charged and sentenced under a Commonwealth statute. Federal sentenced prisoners are counted by the State or Territory in which they were sentenced, not where they were held in custody.
Fine default only	A sentence type indicating that, at the time, the prisoner is serving a sentence for default of a fine and nothing else.
Indigenous prisoner	A prisoner who identifies as either Aboriginal or Torres Strait Islander.
Legal status	The legal status of an offender reflects the warrant(s) or court order(s) which provide the legal basis for the detention in custody of the offender.
Open custody	A custodial regime for managing prisoners which does not require them to be confined by a secure perimeter physical barrier, irrespective of whether a physical barrier exists.
Other sentenced	A sentence type indicating that, at the time, a person is serving a sentence other than, or in addition to, a fine default sentence.
Periodic detention	A type of custody or order where a sentenced prisoner is required to be held in custody for two consecutive days in a one-week period.
Full-time custody	A type of custody where a prisoner is required to be held in custody on a full-time basis.
Prisoner	A person held in custody. For the purposes of this collection, prisoners are those whose confinement is the responsibility of a corrective services agency.
Secure custody	A custodial regime for managing prisoners that requires them to be confined by a secure physical barrier.
Sentenced	A legal status indicating that a person has received a custodial order from a court in response to a conviction for a criminal offence.
Sentenced prisoner reception	<p>Includes persons who enter corrective services custody from the community, having received a sentence of imprisonment as an outcome of a court proceeding. It also includes persons who are sentenced to custody while in custody on remand (i.e. change status from a remand to a sentenced prisoner). Sentenced prisoners in custody who receive a further sentence of imprisonment are not counted as sentenced receptions.</p> <p>Two types of sentenced prisoner reception are distinguished:</p> <ul style="list-style-type: none">▪ A <i>fine default only</i> reception is a sentenced reception where a person enters custody as a result of defaulting on the payment of a fine.▪ An <i>other sentenced reception</i> is a sentenced reception (including changes of status from unsentenced to sentenced) for anything other than a fine default only reception. <p>Note that Victorian reception figures do not include prisoners who change status from unsentenced to sentenced in the period.</p>
Unsentenced	A legal status indicating that a person is confined to custody while awaiting the outcome of their trial. Some sentenced prisoners are also remanded in custody, i.e. are unsentenced, in relation to other offences pending a court hearing. In such cases, these prisoners are counted as sentenced.

FOR MORE INFORMATION...

- INTERNET* **www.abs.gov.au** the ABS web site is the best place to start for access to summary data from our latest publications, information about the ABS, advice about upcoming releases, our catalogue, and Australia Now—a statistical profile.
- LIBRARY* A range of ABS publications is available from public and tertiary libraries Australia-wide. Contact your nearest library to determine whether it has the ABS statistics you require, or visit our web site for a list of libraries.
- CPI INFOLINE* For current and historical Consumer Price Index data, call 1902 981 074 (call cost 77c per minute).
- DIAL-A-STATISTIC* For the latest figures for National Accounts, Balance of Payments, Labour Force, Average Weekly Earnings, Estimated Resident Population and the Consumer Price Index call 1900 986 400 (call cost 77c per minute).

INFORMATION SERVICE

Data which have been published and can be provided within five minutes are free of charge. Our information consultants can also help you to access the full range of ABS information—ABS user-pays services can be tailored to your needs, time frame and budget. Publications may be purchased. Specialists are on hand to help you with analytical or methodological advice.

- PHONE* **1300 135 070**
- EMAIL* **client.services@abs.gov.au**
- FAX* 1300 135 211
- POST* Client Services, ABS, GPO Box 796, Sydney 1041

WHY NOT SUBSCRIBE?

ABS subscription services provide regular, convenient and prompt deliveries of ABS publications and products as they are released. Email delivery of monthly and quarterly publications is available.

- PHONE* 1300 366 323
- EMAIL* subscriptions@abs.gov.au
- FAX* 03 9615 7848
- POST* Subscription Services, ABS, GPO Box 2796Y, Melbourne 3001



2451200006008
ISSN 1440-5997

RRP \$20.00